

# Everards Print Works

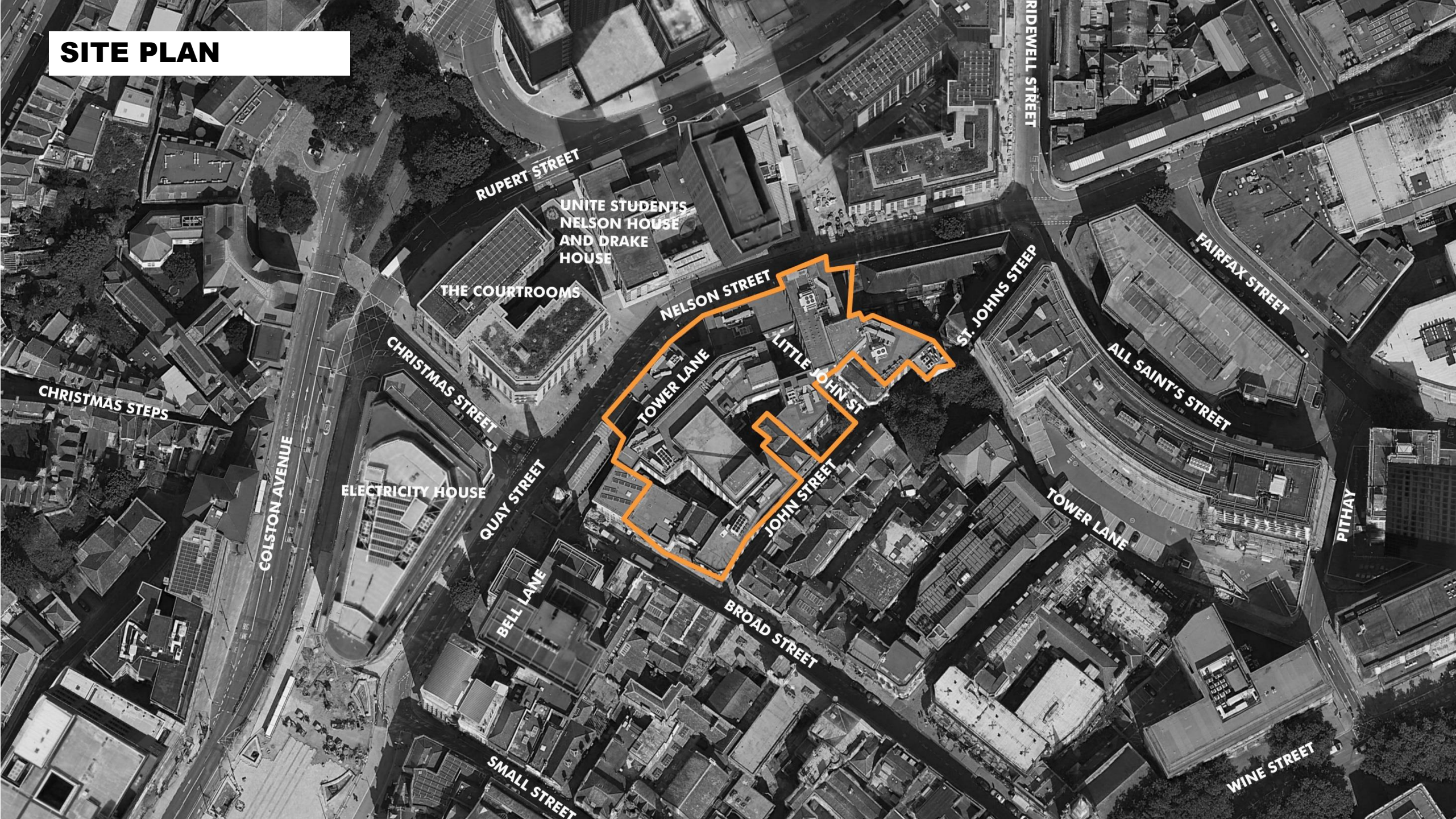
Bristol Civic Society

25<sup>th</sup> July 2023





# SITE PLAN



UNITE STUDENTS  
NELSON HOUSE  
AND DRAKE  
HOUSE

THE COURTRROOMS

ELECTRICITY HOUSE

ALL SAINT'S STREET

# SITE PLAN









Everard's Print Works



# Everard's Printing Works, Bristol

## History of Everard's



St. John's Church Constructed C14<sup>th</sup>/15<sup>th</sup>

c15<sup>th</sup>

Norman City Wall Construction



1480



J.S Fry & Sons moved to Nelson Street

c17<sup>th</sup>

35 & 36 Broad Street construction



1761



Construction of Everard's Printing Works

1844

Bristol's Industrial Revolution

1901





# Everard's Printing Works, Bristol

## History of Everard's



Construction of Everard's Printing Works

1844

Bristol's Industrial Revolution



1901



Bristol WWII Blitz

1941

1970



Construction of NatWest Court

2011



More recent heritage with the 'See no evil' urban art festival

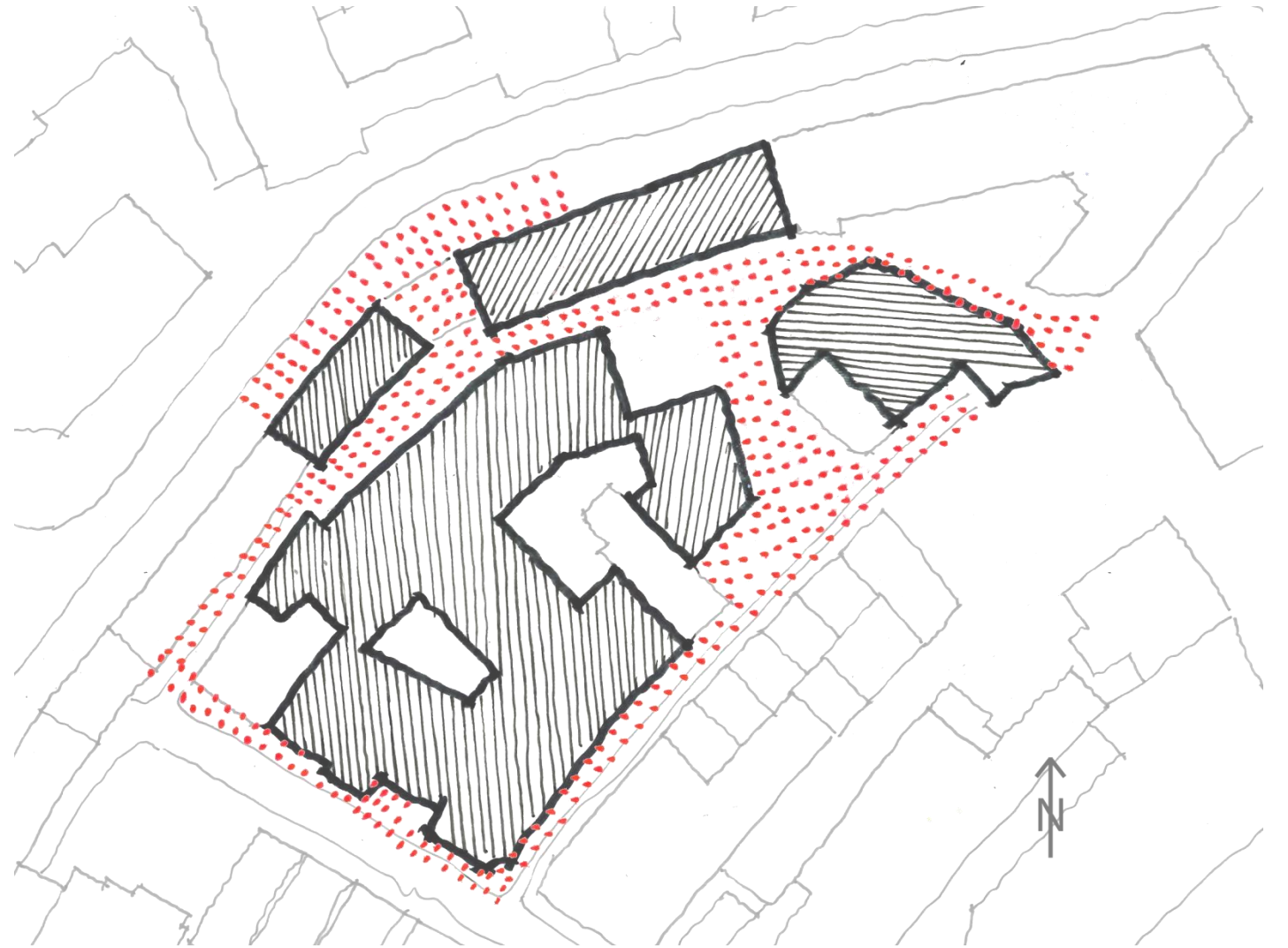
2018+

New mixed use for the existing buildings on a key centre city site





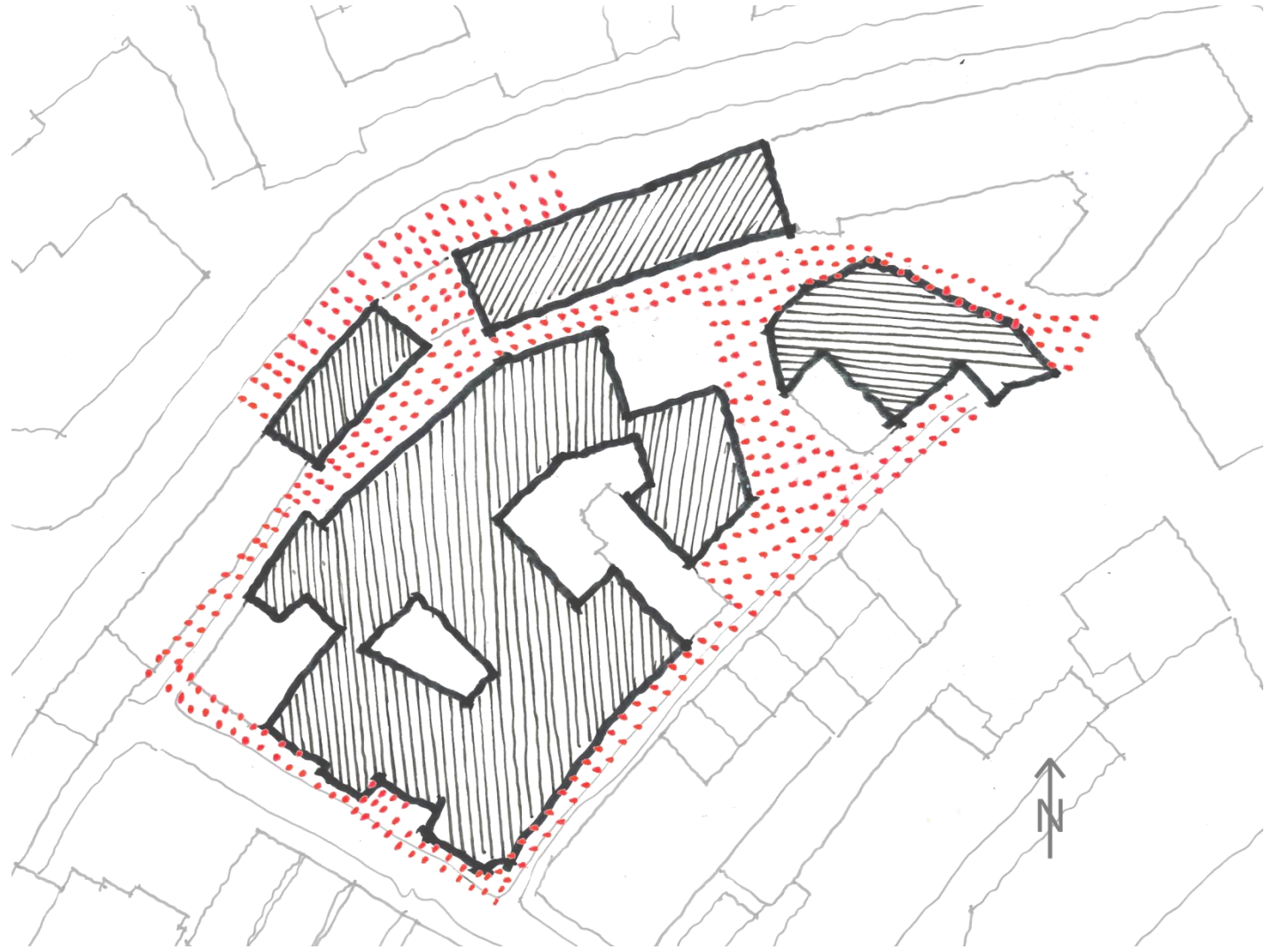
# OPPORTUNITIES





# OPPORTUNITIES

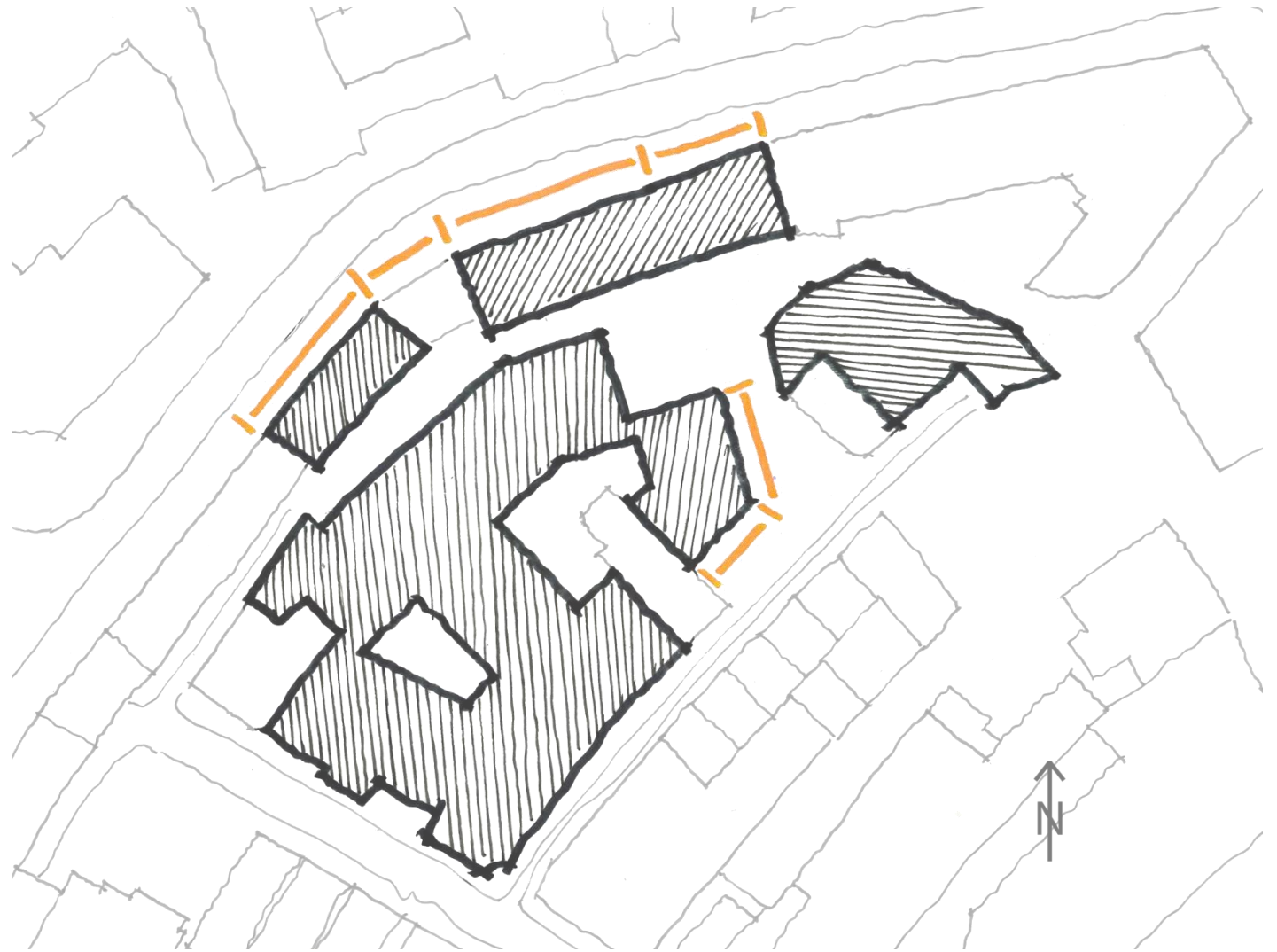
1. Improve public realm





# OPPORTUNITIES

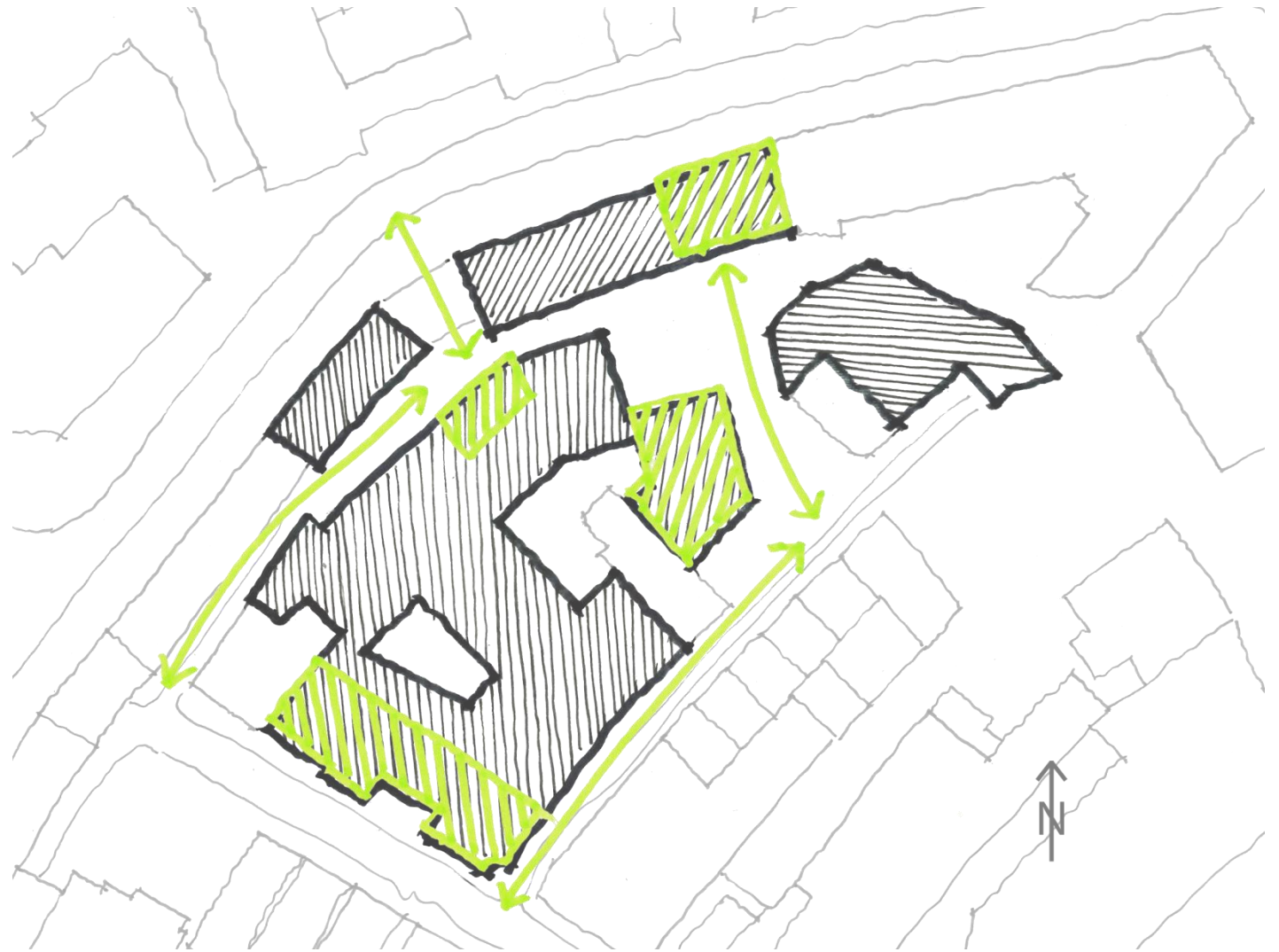
1. Improve public realm
2. Break up blank facades





# OPPORTUNITIES

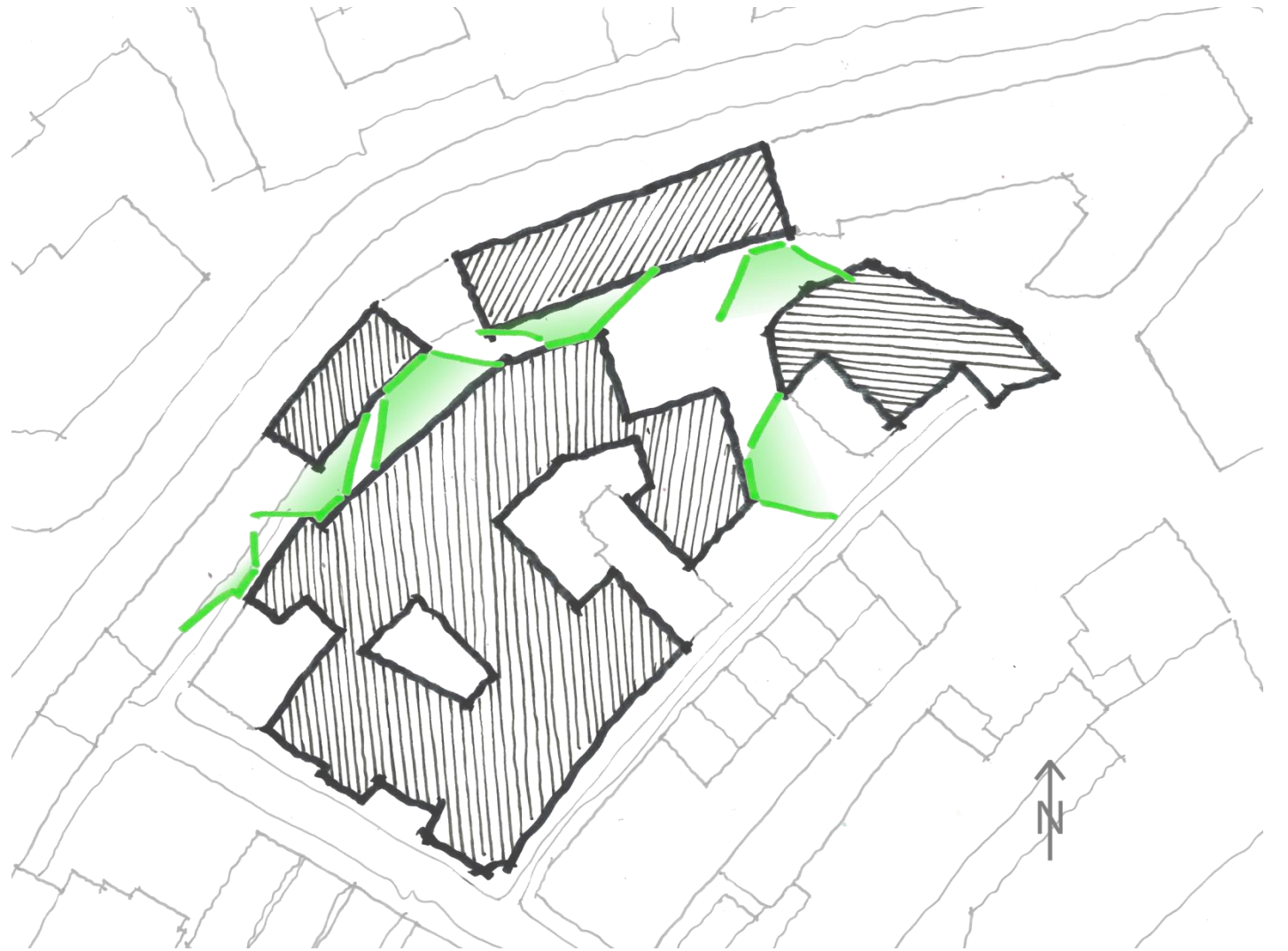
1. Improve public realm
2. Break up blank facades
3. Attraction points





# OPPORTUNITIES

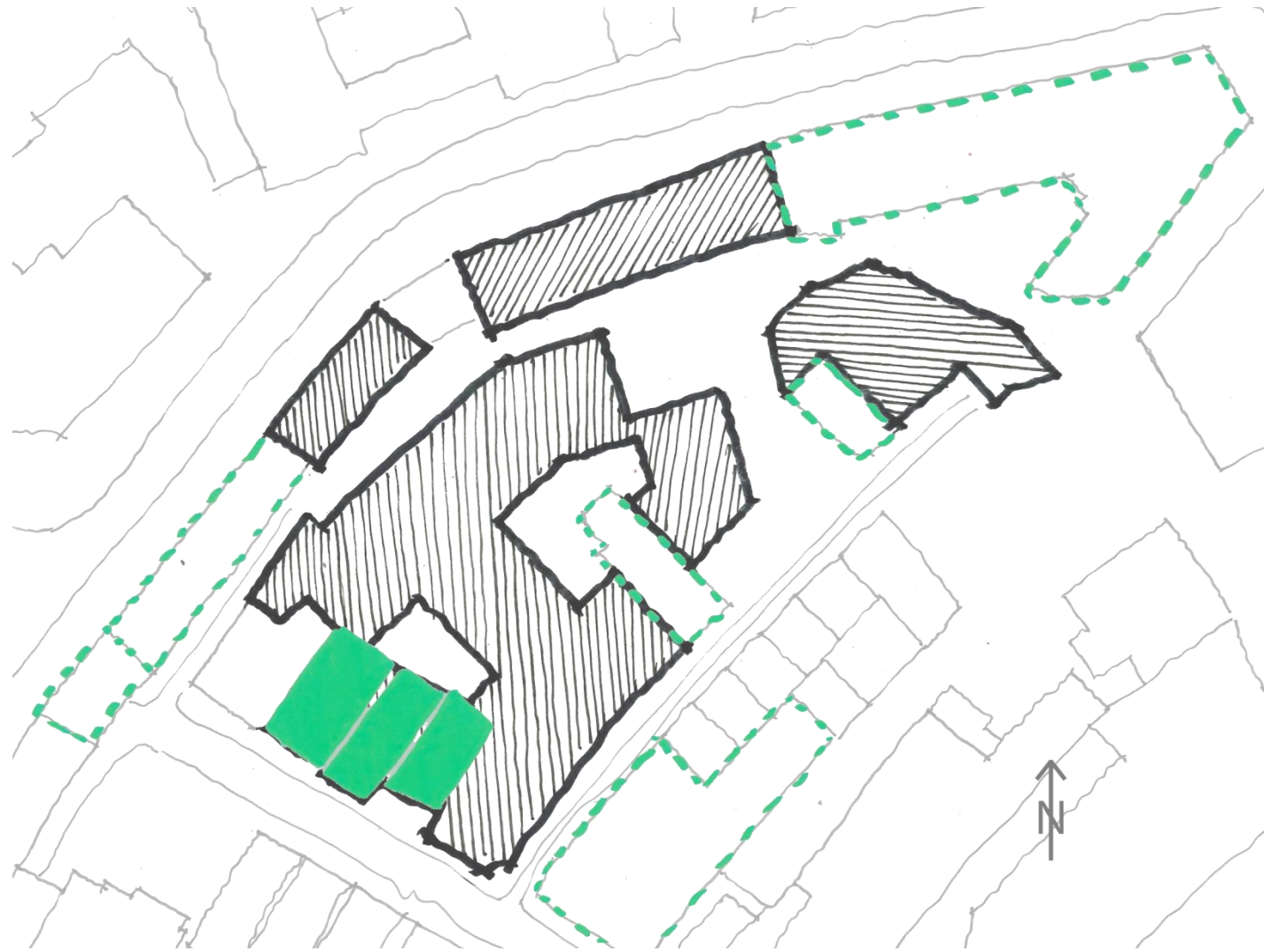
1. Improve public realm
2. Break up blank facades
3. Attraction points
4. Improved surveillance





# OPPORTUNITIES

1. Improve public realm
2. Break up blank facades
3. Attraction points
4. Improved surveillance
5. Reveal historic significance





# OPPORTUNITIES

1. Improve public realm
2. Break up blank facades
3. Attraction points
4. Improved surveillance
5. Reveal historic significance
6. Active frontages





# OPPORTUNITIES

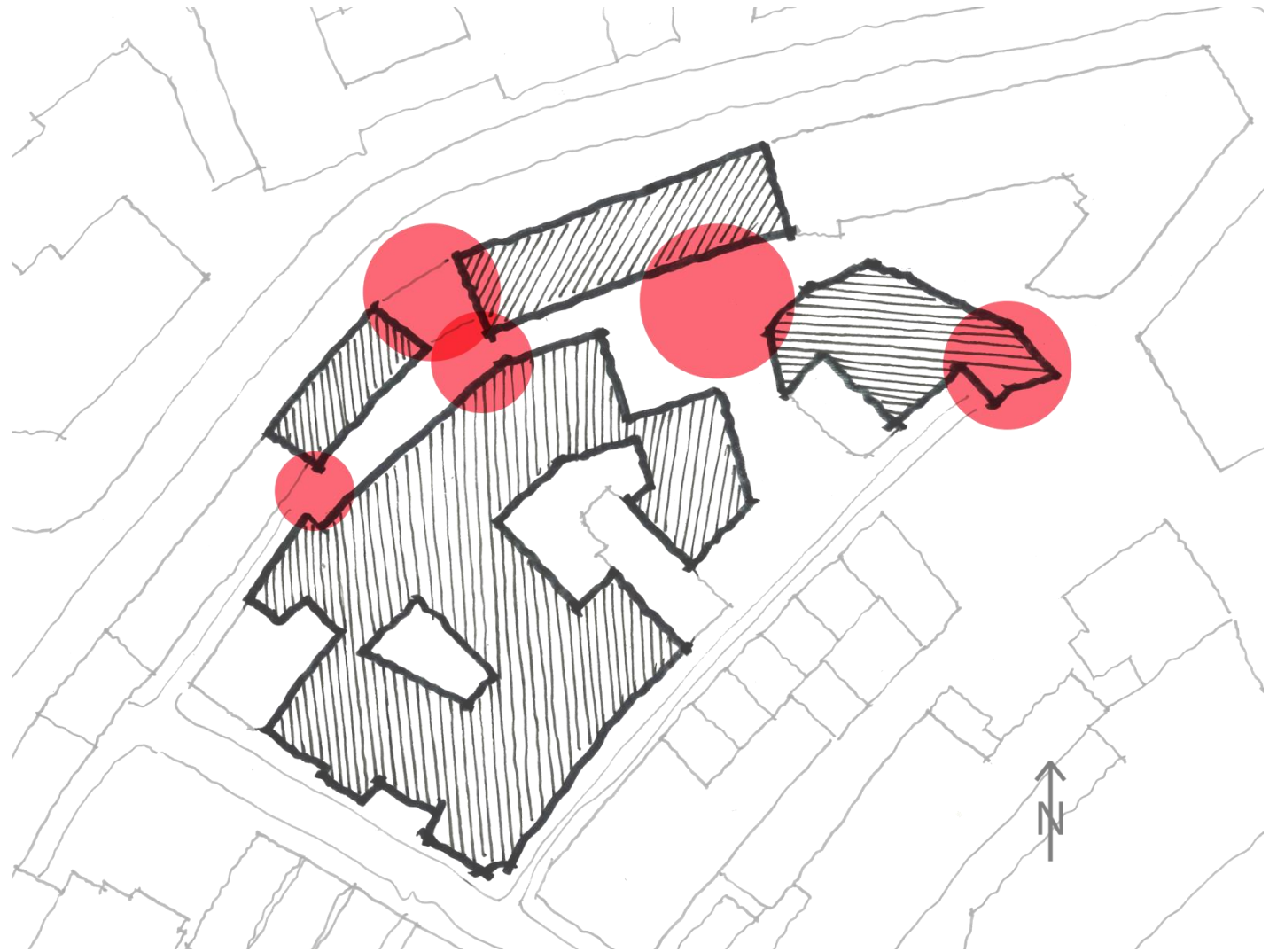
1. Improve public realm
2. Break up blank facades
3. Attraction points
4. Improved surveillance
5. Reveal historic significance
6. Active frontages
7. Declutter areas





# CONSTRAINTS

## 1. Vulnerable external areas

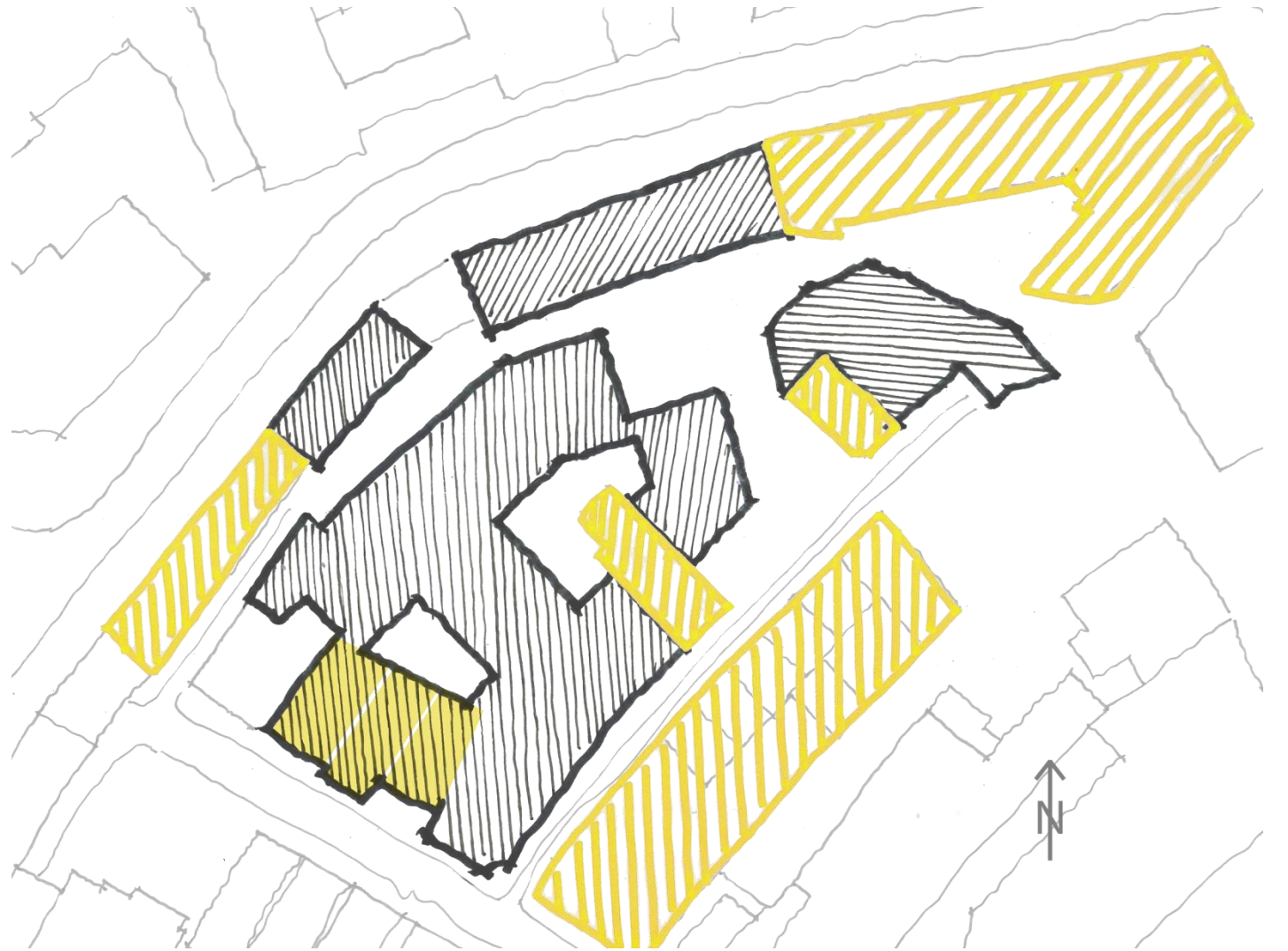




# CONSTRAINTS

1. Vulnerable external areas

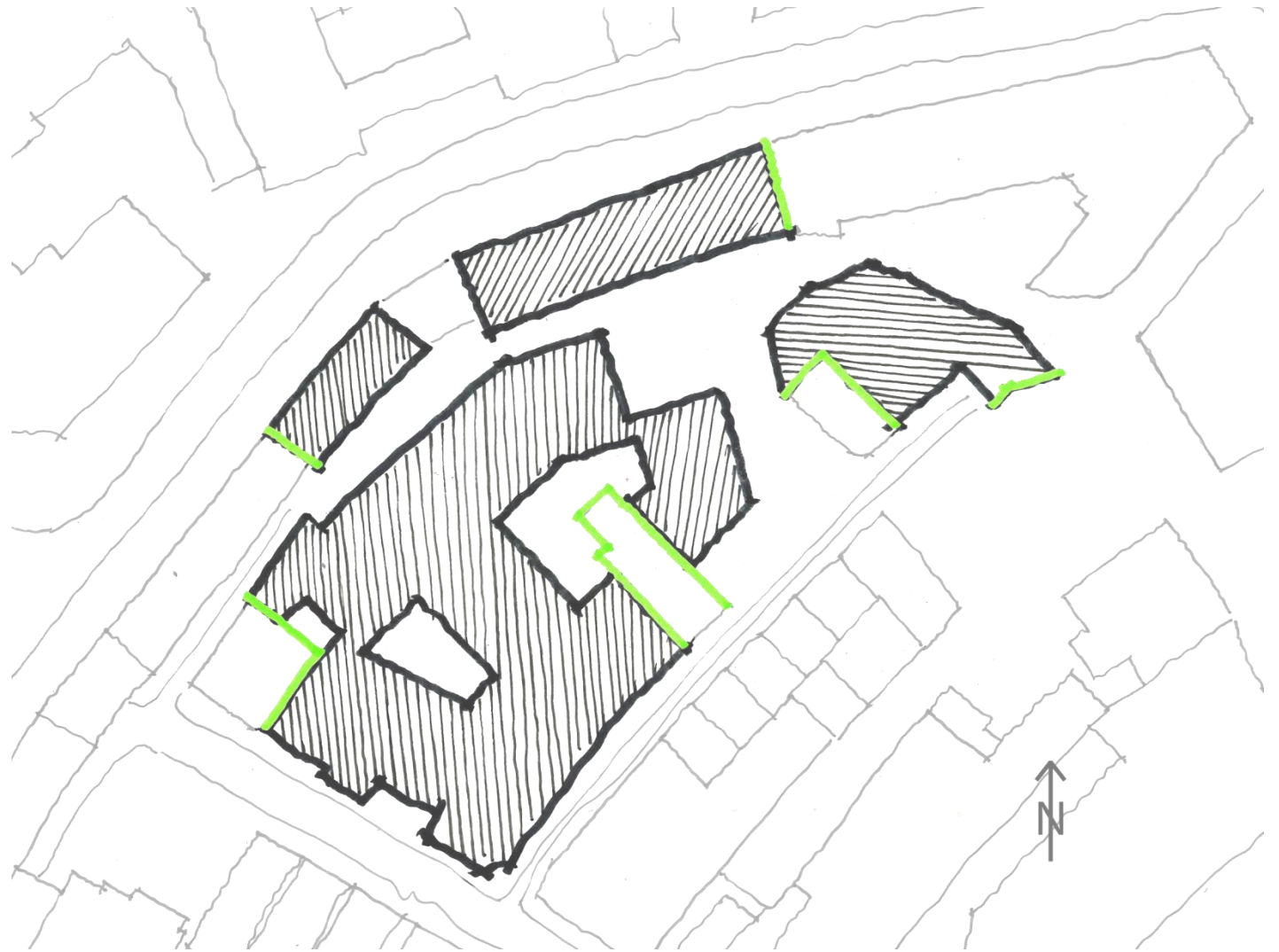
2. Heritage assets





# CONSTRAINTS

1. Vulnerable external areas
2. Heritage assets
3. Party Walls



# CONSTRAINTS

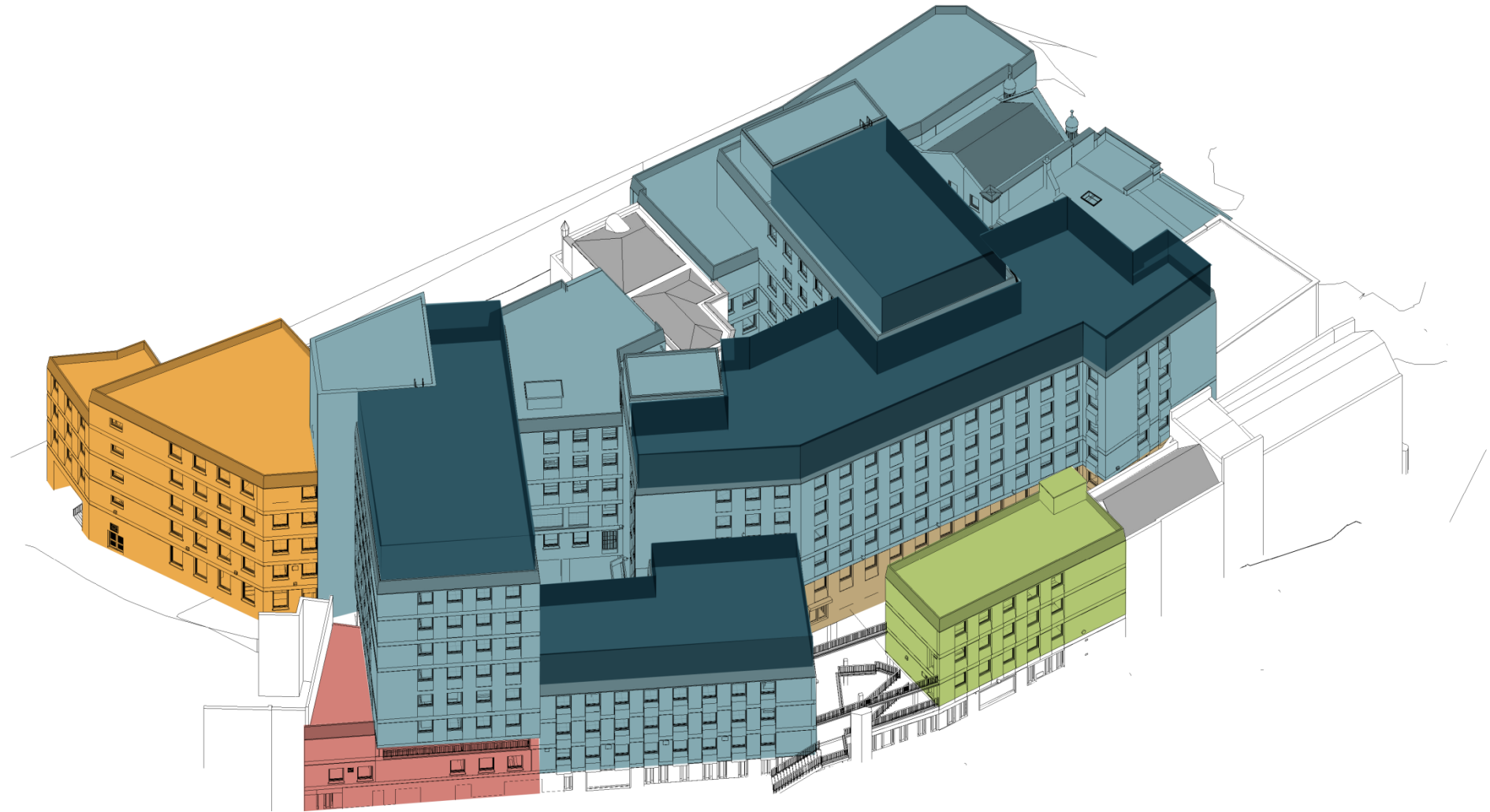
1. Vulnerable external areas
2. Heritage assets
3. Party Walls
4. Public rights of way





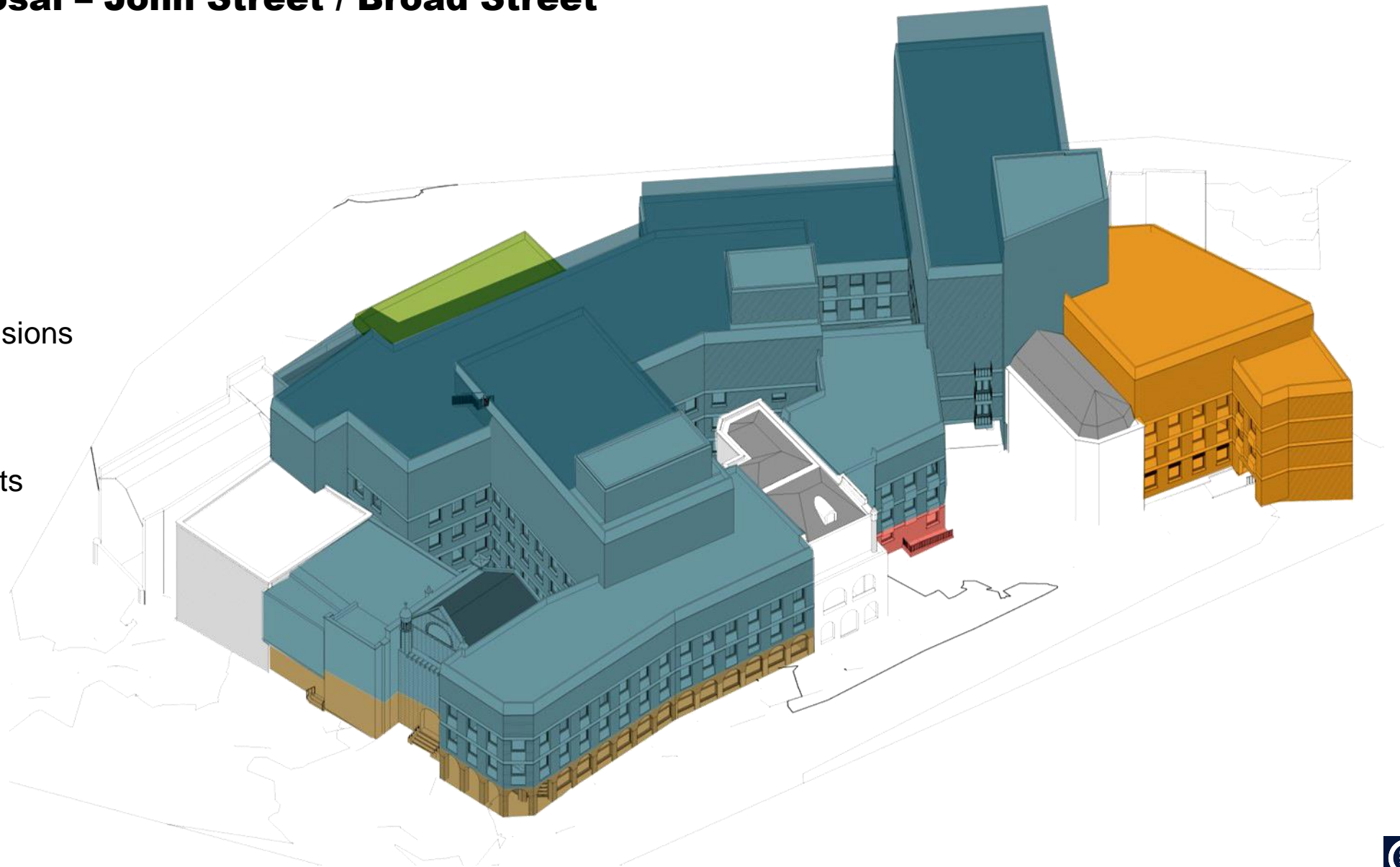
# Mixed Use Proposal – Nelson Street

- Hotel amenity
- Hotel rooms
- Hotel rooftop extensions
- Residential
- Serviced apartments
- Retail / Office



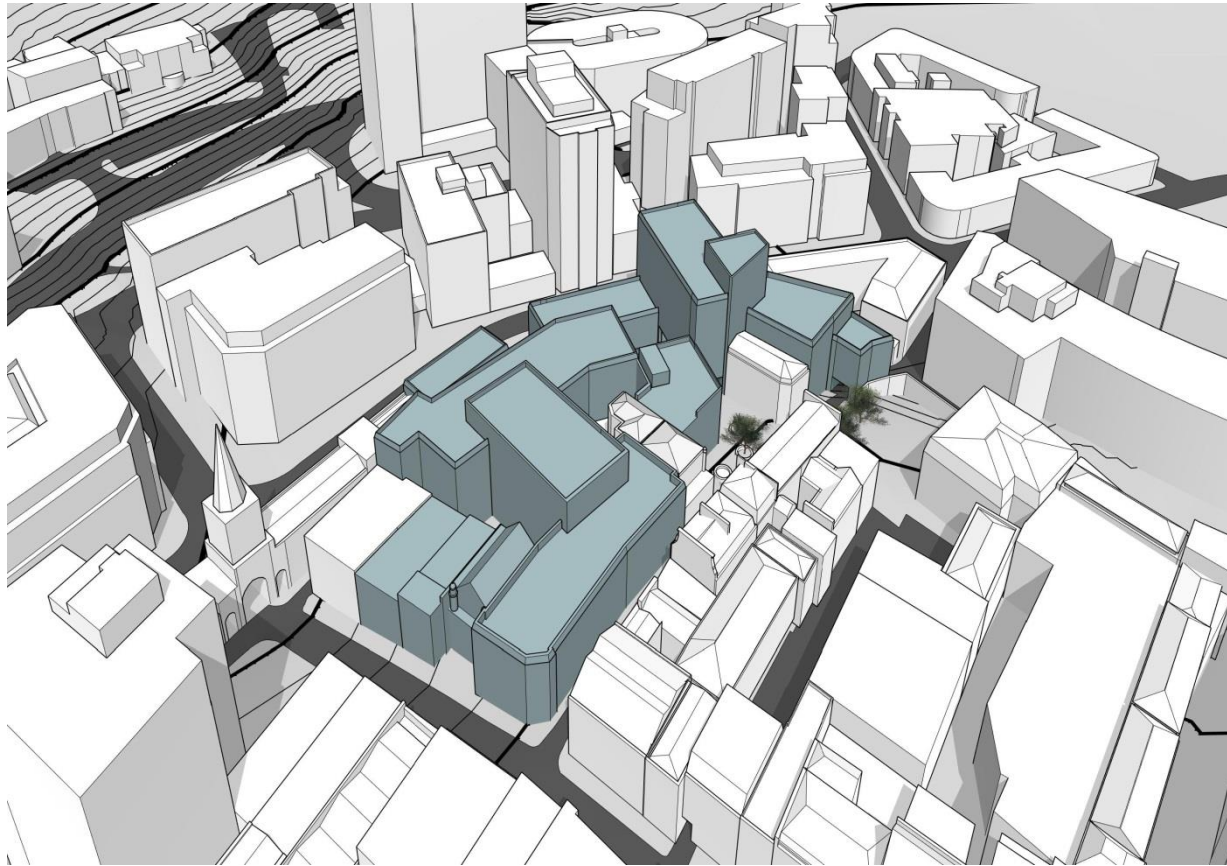
# Mixed Use Proposal – John Street / Broad Street

- Hotel amenity
- Hotel rooms
- Hotel rooftop extensions
- Residential
- Serviced apartments
- Retail / Office





# DETAIL – MASSING



Existing



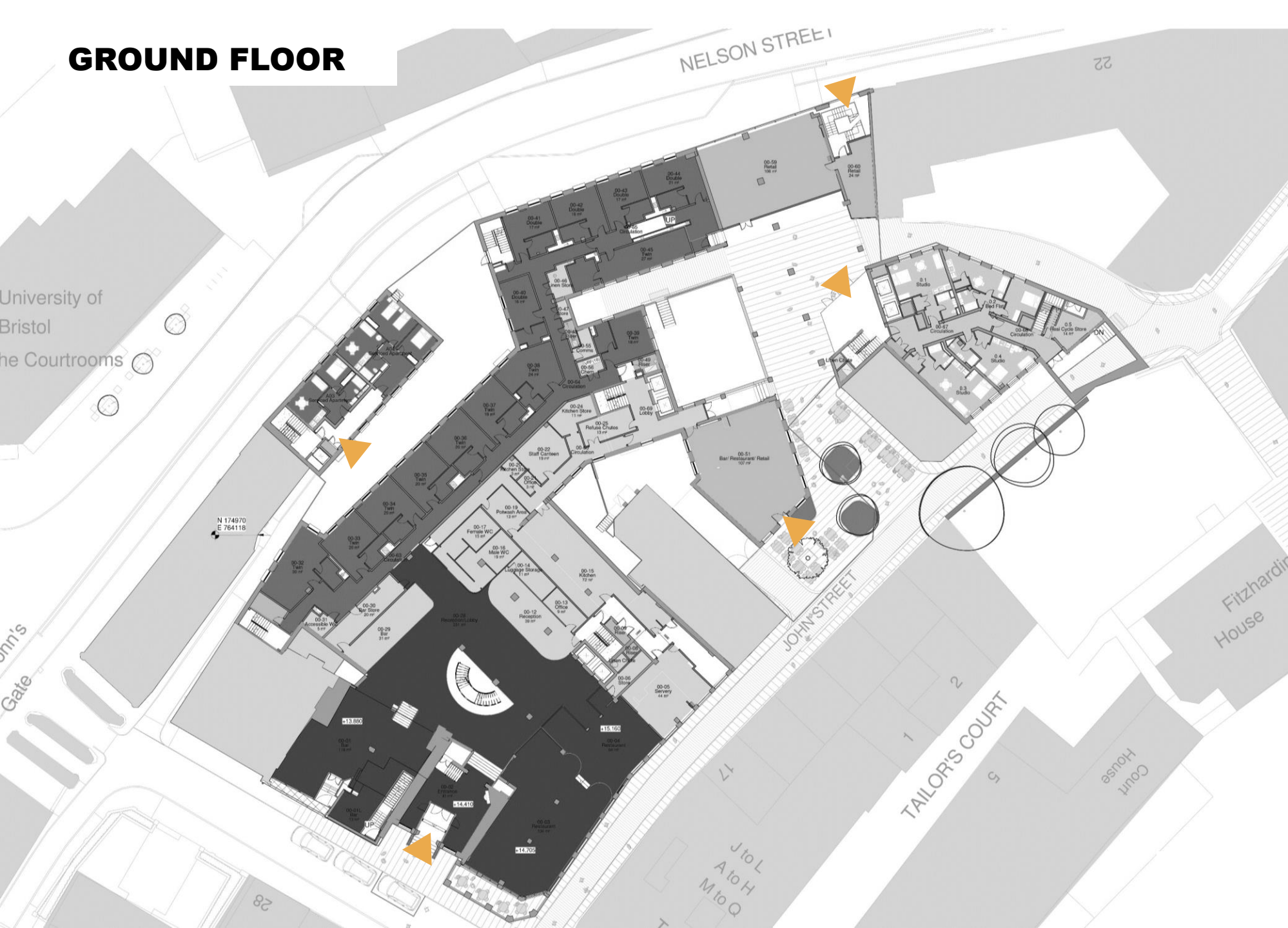
Proposed







# GROUND FLOOR



▶ Entrances



Everard's Print Works

# LOWER GROUND FLOOR 1





# LOWER GROUND FLOOR 2



## Car Spaces

- Total 20 Spaces
- 17 Standards
- 3 Accessible

## Accommodation

- 250 Bed Hotel
- 6 Serviced Apartments
- 23 Flats
  - 8 x 1 Bed Flats
  - 15 x Studios
- 365 m2 Retail

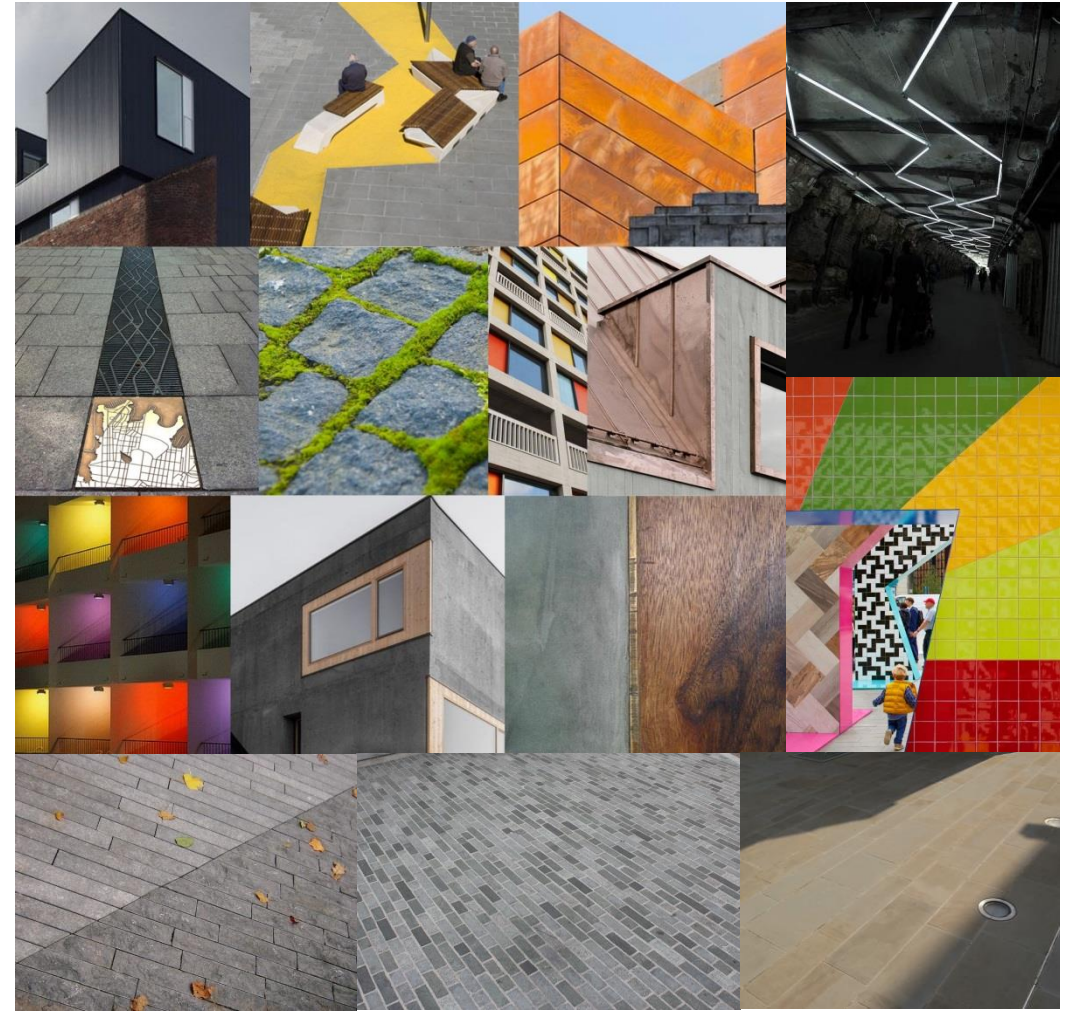




# DETAIL – MATERIALS



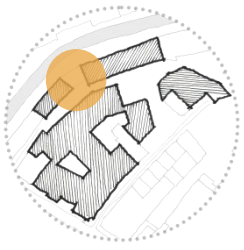
Existing



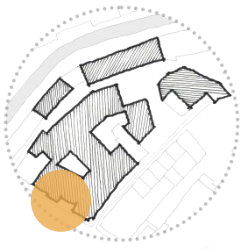
Proposed



# DETAIL – NELSON STREET

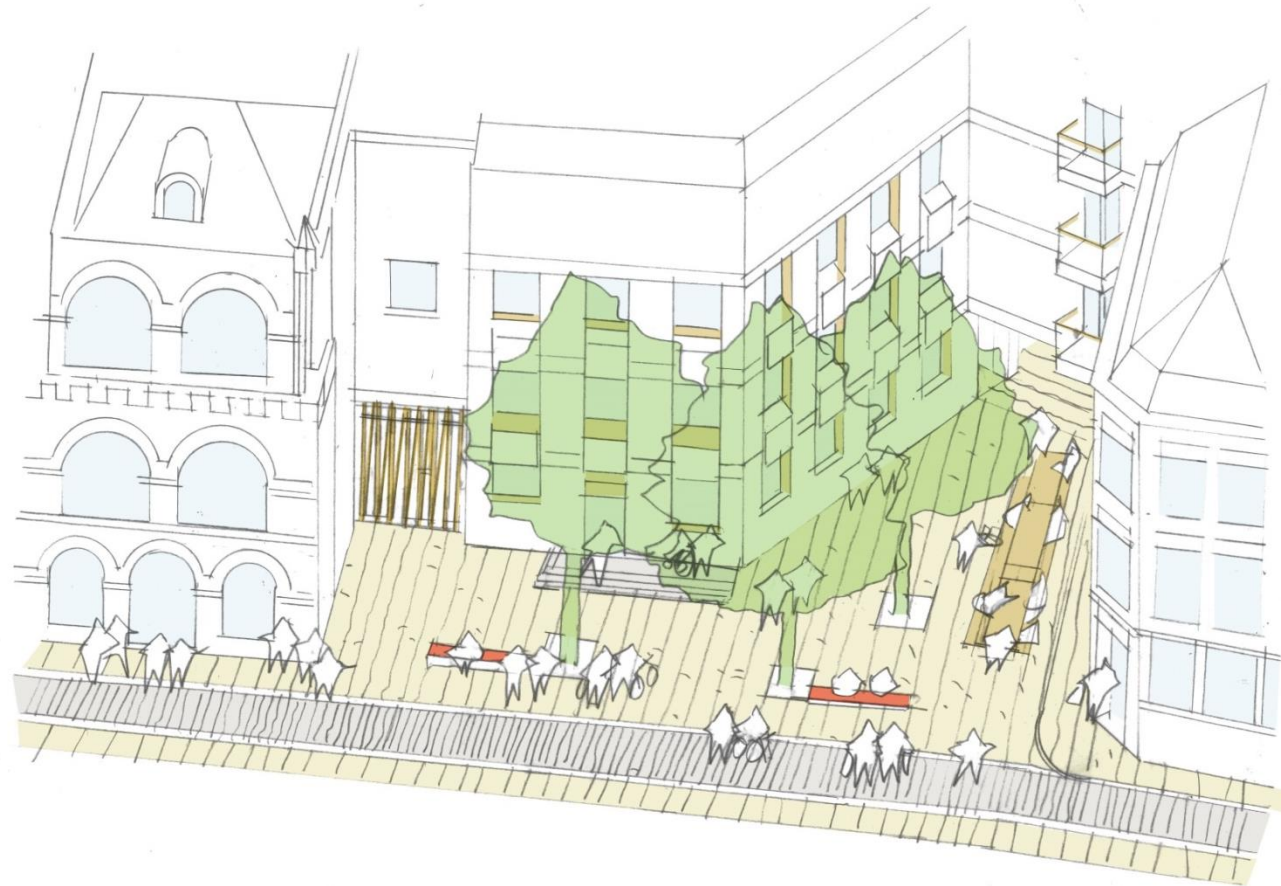


# DETAIL – BROAD STREET



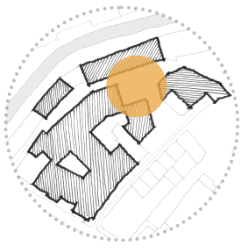


# DETAIL – LITTLE JOHN STREET



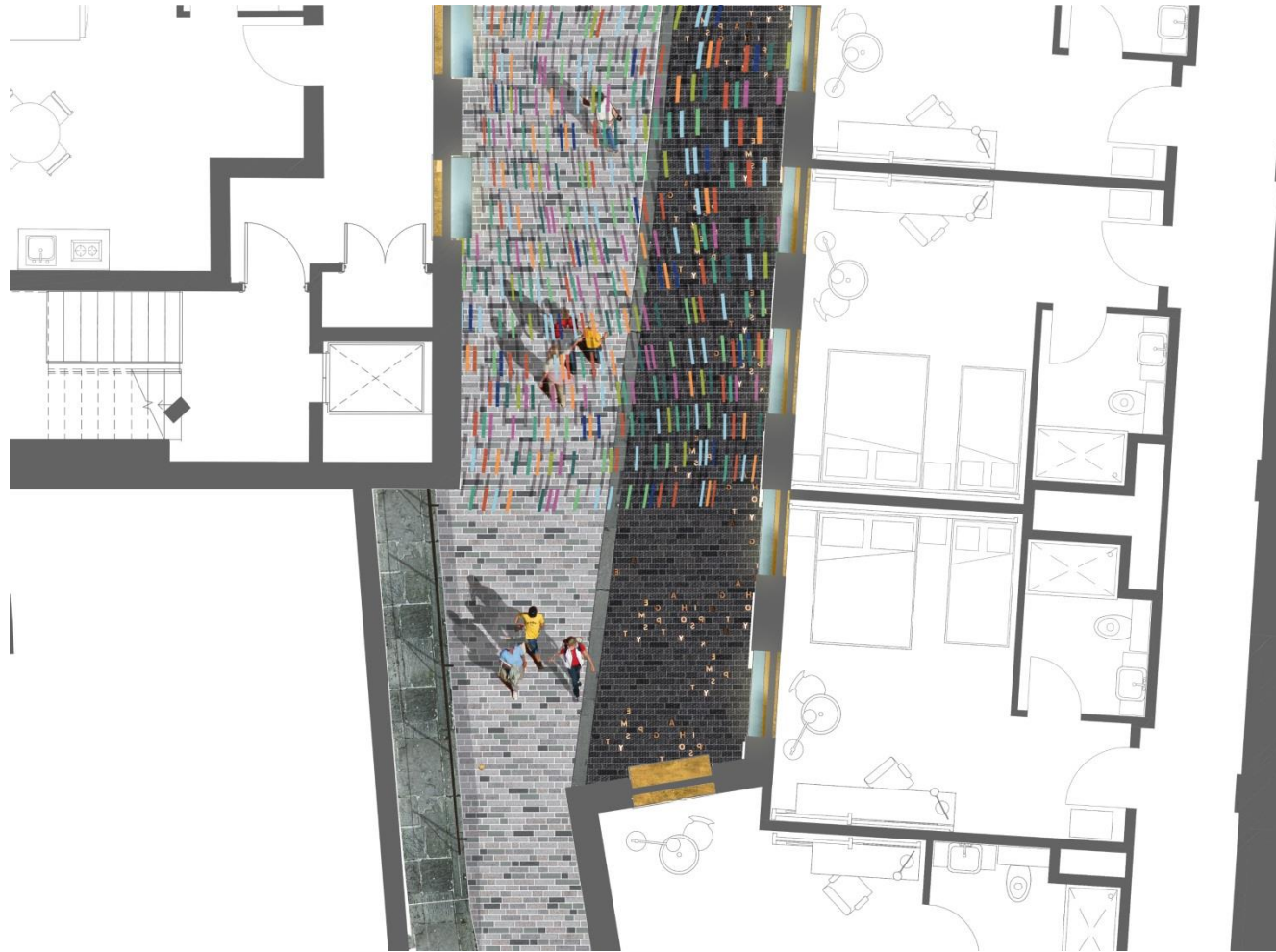
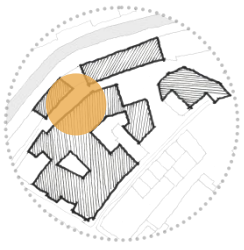


# DETAIL – LIGHTWELL 1






# DETAIL – TOWER LANE




# PUBLIC ART - OPPORTUNITIES

## OLD CITY WALLS & GATES

 Celebration of historic gateways

 Old city wall inground markers

## THE CLOTHIERS

 Uplift to areas of buildings spanning over streets - ceramic tiles reflecting printworks and stacked fabrics of the clothiers


 Suspended art installation

 Lightwell 1 Garden

 Clothiers sculpture

## THE PRINTWORKS & THE ARTS & CRAFT MOVEMENT

 Hotel Internal Art strategy

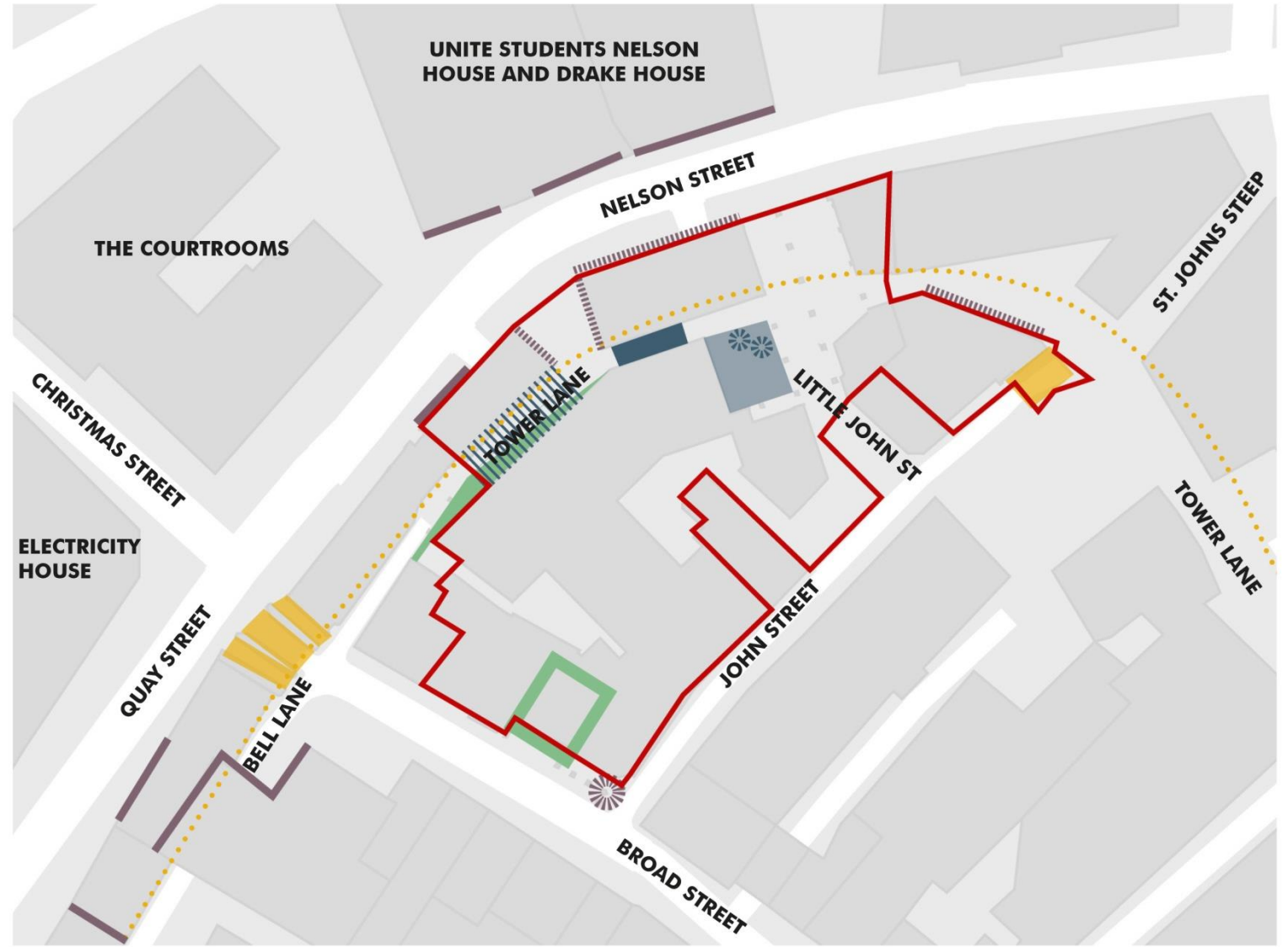
 Printworks brass letters embedded in paving

## STREET ART & 1970s ARCHITECTURE

 Existing Street Art on Nelson Street

 Potential for Street Art

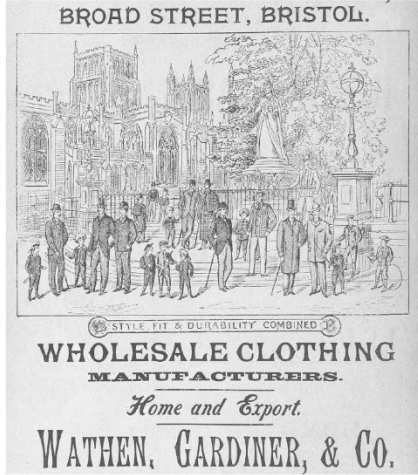
 Architectural Signage proposal





# PUBLIC ART

## HISTORIC REFERENCES



Wathen, Gardiner & Co. Clothiers



Tailor's Mannequin



Dicksonia antarctica



Printworks letter typeset



The Old City Wall

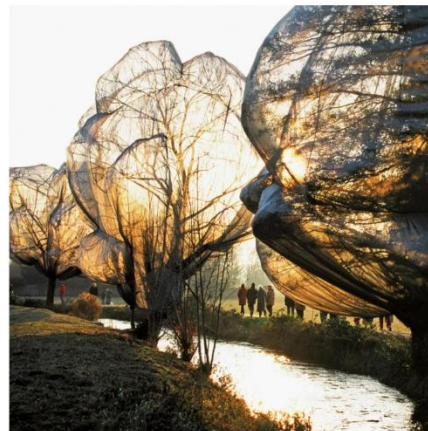
## INTERPRETATION



Draped Fabric



Ceramic Tiles



Wrapped Trees



Metalwork Sculpture



Sculptural Lighting



































# Everards Print Works

Bristol Civic Society

25<sup>th</sup> July 2023

