



ACORN



Galliard
Homes



ferguson
mann
architects





TEMPLE MEADS
TRAIN STATION

VICTORIA PARK

ST MARY
REDCLIFFE CHURCH

M SHED

BRISTOL
HARBOURSIDE

BRISTOL
CATHEDRAL

ASHTON
GATE

TEMPLE QUAY

CASTLE PARK

CABOT CIRCUS

STOKES
CROFT

GLOUCESTER
ROAD

BROOKS
DYE
WORKS

M32

MINA ROAD
PARK

Location
St Werburgh's



1819: Brooks Dye Works is established as a textile dyeing enterprise in Bristol city center.

1862: Alfred Brooks assumes leadership, propelling the company's growth and establishing it as a prominent employer.

Late 19th to early 20th century: Brooks Dye Works expands its operations and becomes an integral part of the St Werburghs community.



During World Wars I and II: The company supports the nation by providing clean sheets and uniforms for British troops and medical personnel.

2007: Brooks Dye Works ceases operations, marking the end of an era for the company.

History
The Dye Works



History
2017 Drone Photos

History
2017 Demolition





OP Sketch
Morley Street



OP Sketch
Southey Street



OP Sketch
Morley Street



OPP Sketch
Southey Street

OP Sketch
Mina Park Extension



Initial CGI
Mina Park Extension



Planning Approval RMA Site Plan



Southhey Street

Ashley Grove Road

Sevier Street

FUTURE DEVELOPMENT

76 77 78 79

Alfred Brooks Square

Play Area

Brooks Dye Works Chimney

Mina Park Crescent

58 59 60 61 62 63 64 65 66 67 68 69 70 71 72 73

Mina Road Park

Brooklyn Street

AH

AH

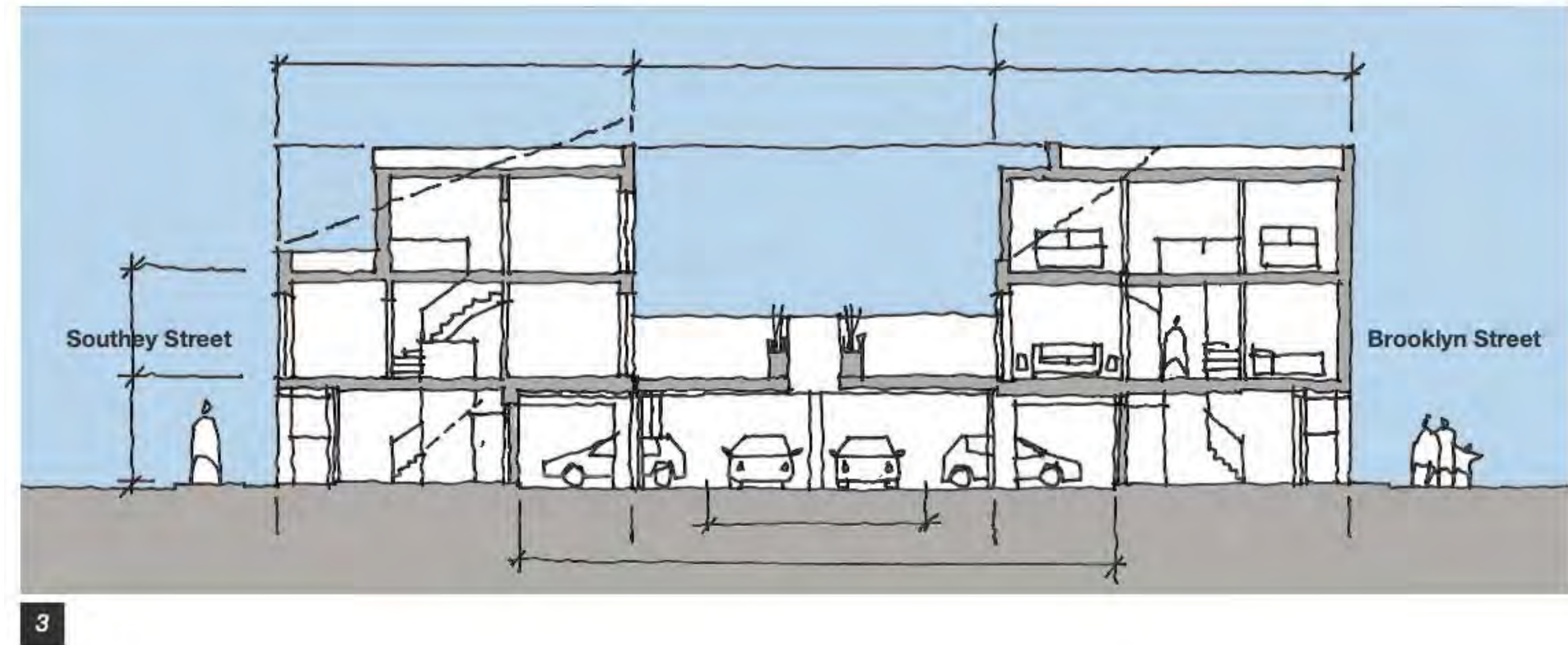
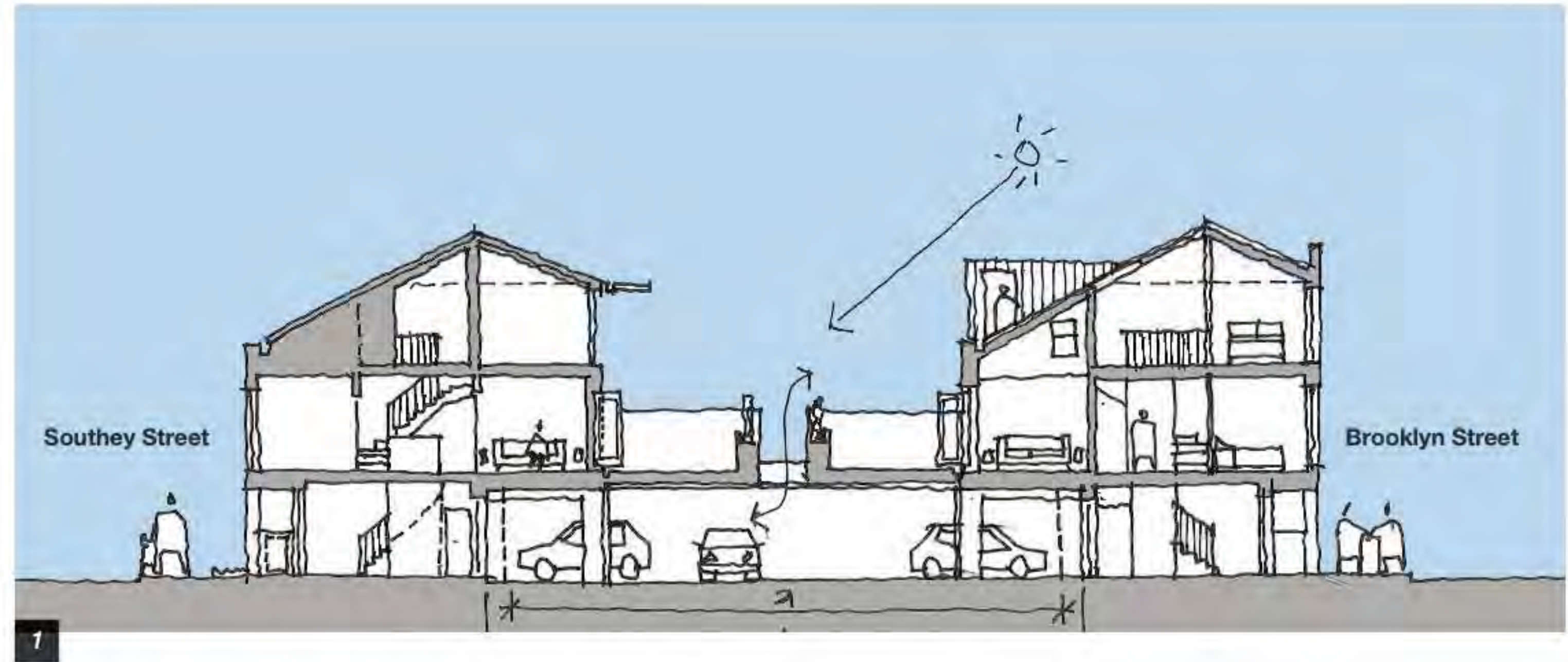
AH

AH

Morley Street

Ashley Street

75 74

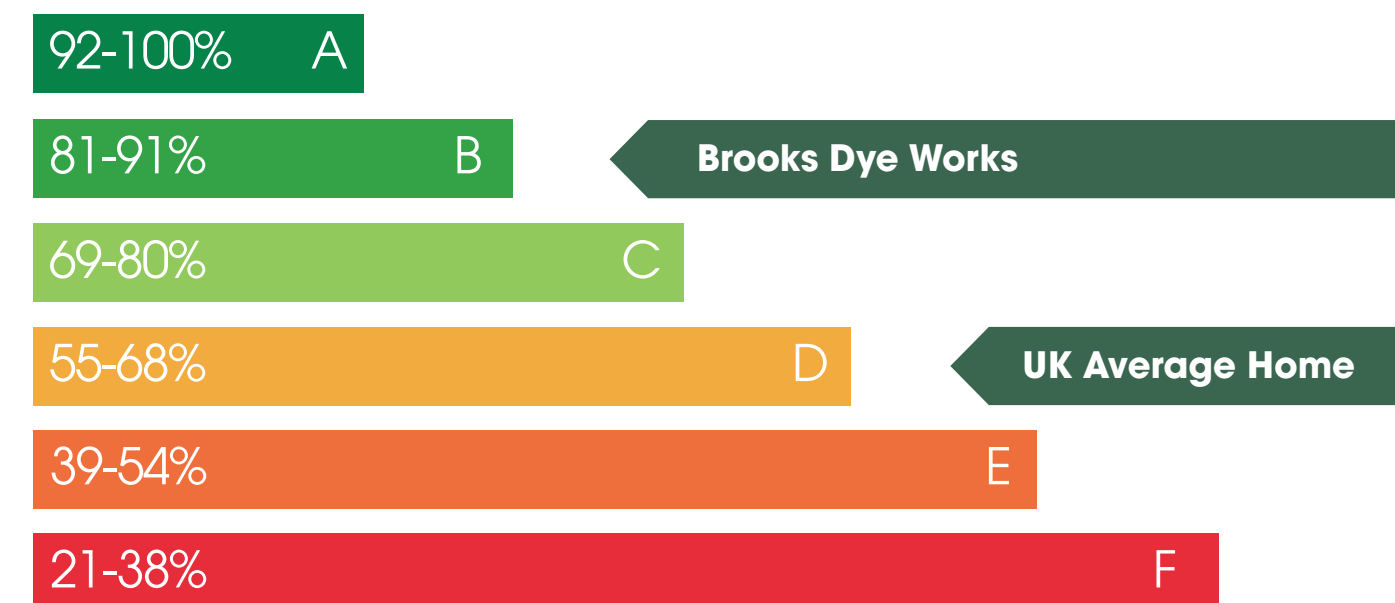


Sustainability at Brooks Dye Works

Our award-winning homes have been built with a fabric first approach, by ensuring the efficiency of our building's envelope to limit heat loss, your home has less impact on the environment and lower energy bills.

Each home is rated EPC (Energy Performance Certificate) B which is above the UK average of D. This means that the carbon footprint of a new home at Brooks Dye Works is reduced by approximately 70% and running costs also reduced by up to 30% compared to an existing home in the UK!

Brooks Dye Works energy efficiency rating compared to the national average



KEY SUSTAINABLE FEATURES INCLUDE



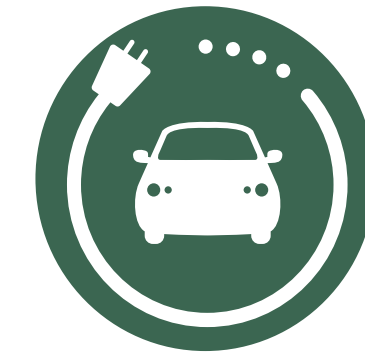
High performance window systems



Cycle Storage



Timber frame construction



Communal electric car charging



63 new trees planted



Sustainable urban Drainage Systems



New pedestrian routes to Mina Road Park



Smart Meters





Community

Legacy



BROOKS DYE WORKS

This landmark chimney at Brooks Dye Works was erected in the late 19th century to service the growing business of dyeing, dry cleaning and laundering. The original dye works was established by Alfred Brooks who grew and developed the business which continued on this site until 2007.

Visible from across the city this iconic monument used to be over 20ft. taller and once thought to be the tallest chimney in Bristol.

Another unusual feature about this chimney is the lettering alongside it which was delineated in white bricks so that it should never need repainting.



Completion
Drone Photos



Completion
Drone Photos



Completion
Drone Photos



Interiors





Interiors





ACORN