

Cllr Nicola Beech

Cabinet lead for Spatial Planning and Design

Bristol City Council

BUILDING LIVEABLE NEIGHBOURHOODS

Festival of the Future City, Friday 18 October



Our Vision

By 2050, we want Bristol to be a city where

“Everyone can play their part in powerful, connected, inclusive neighbourhoods with access to the things needed for a good life.”



One City Plan

What makes a neighbourhood 'liveable'

- Location
- Connectivity
- Density
- Community
- Amenities
- Sustainability



Our Strengths and our Challenges

Bristol has a successful economy

- Net Contributor to the Treasury
- High skilled economy
- West of England has the highest Gross Value Added growth rate of all Core City Local Enterprise Zone areas.

But Bristol also struggles with...

- Inequality
- Housing crisis
- Population growth
- Retail crisis



Our Strengths and our Challenges

Bristol enjoys strong external connectivity-

- Deep sea Port
- Airport
- M5 and M4 Motorways
- Rail links to London, South Wales and South West

But within the city...

- Some of the worst congestion in the UK
- Fractured communities with poor access to jobs and opportunity
- A Climate Emergency – a need to reduce consumption and plan in our mitigations

Improving Existing Neighbourhoods















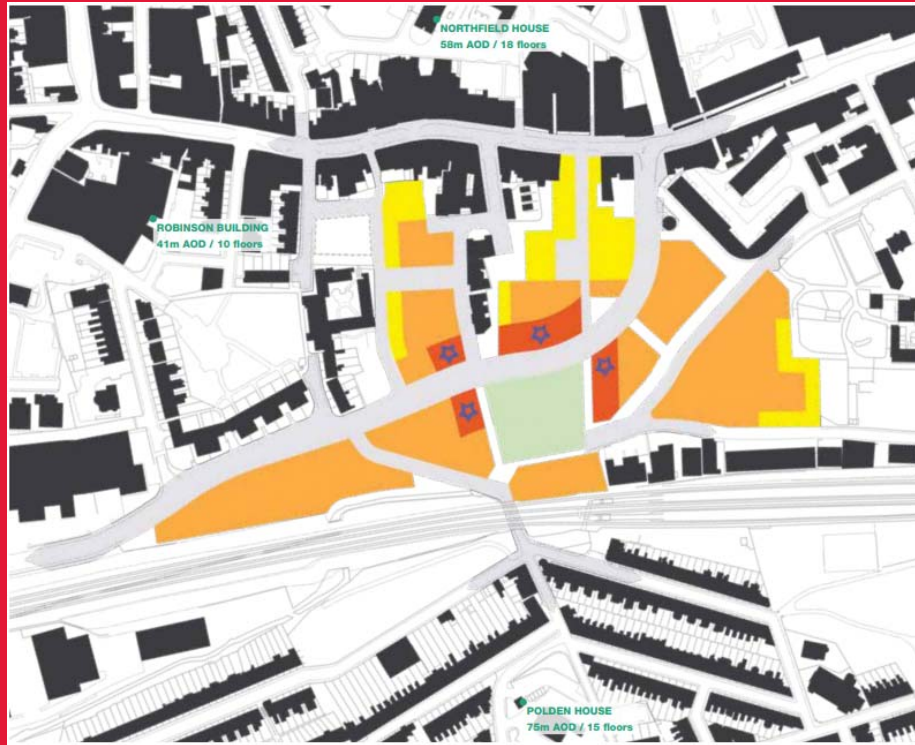


Looking to the Future

Greater Bedminster

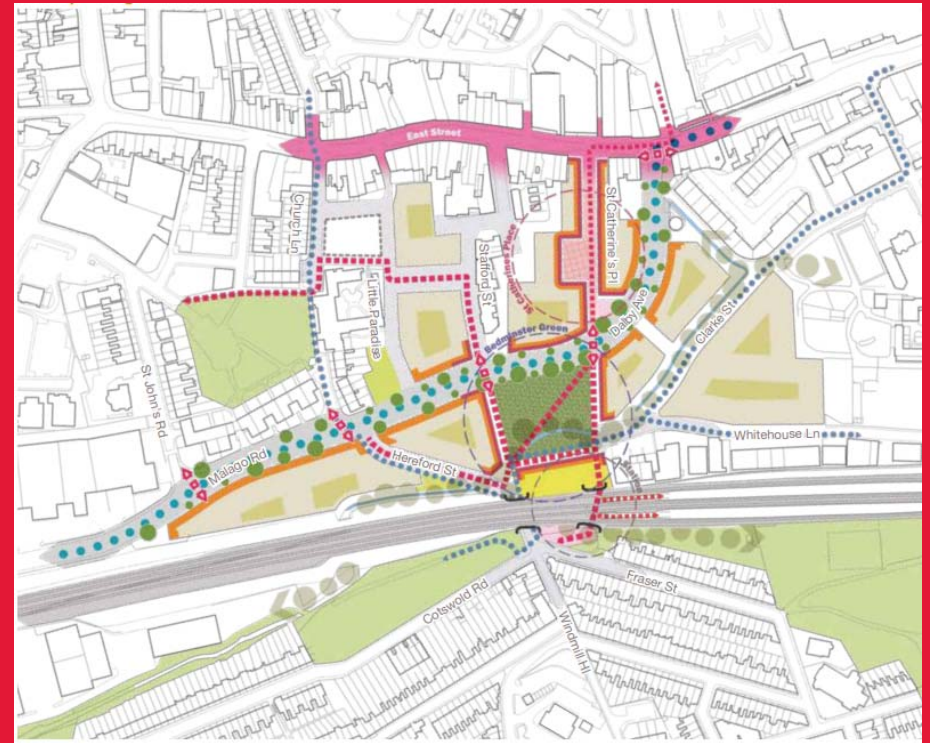


Bedminster Green

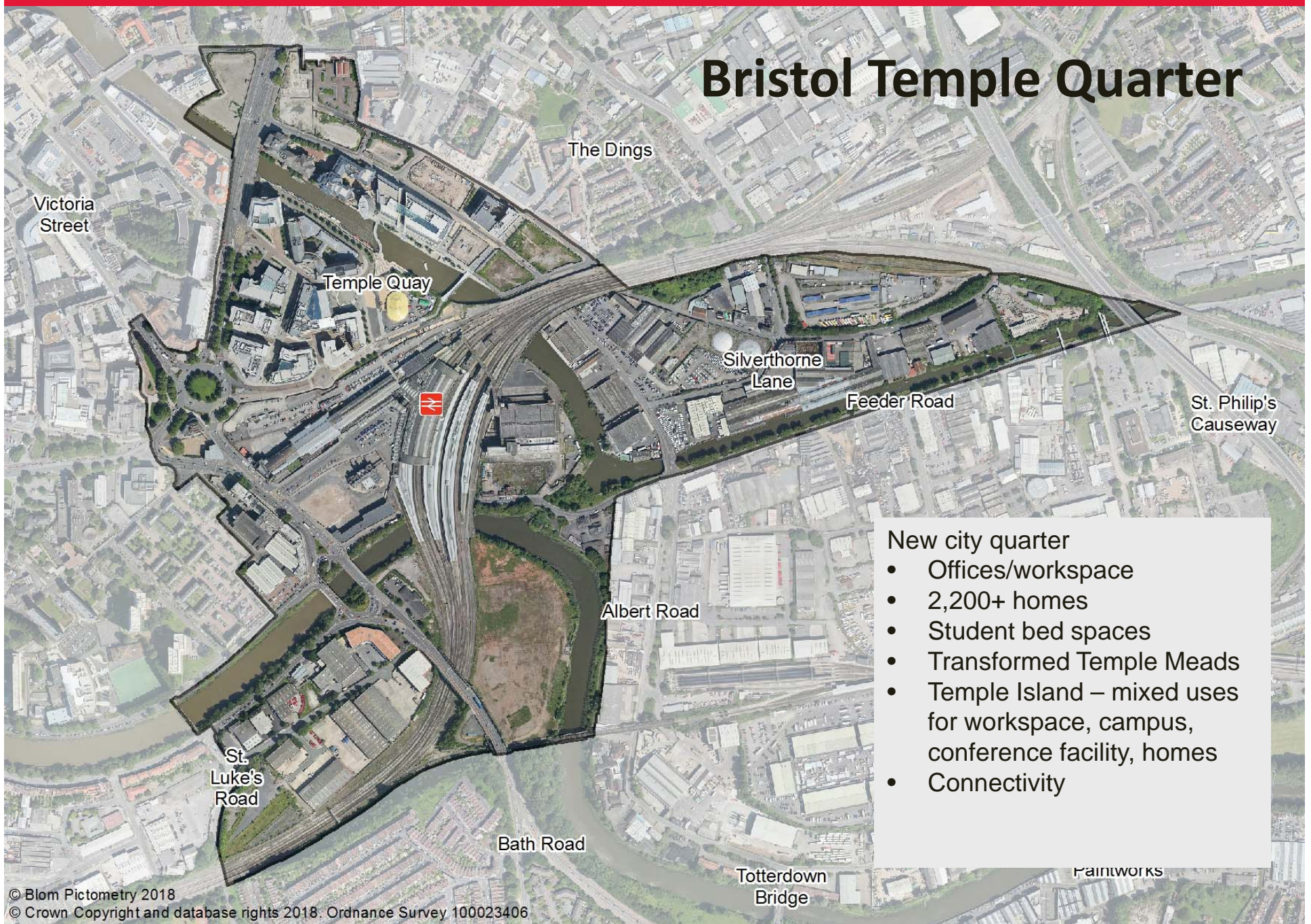


Height

Usage



Bristol Temple Quarter



New city quarter

- Offices/workspace
- 2,200+ homes
- Student bed spaces
- Transformed Temple Meads
- Temple Island – mixed uses for workspace, campus, conference facility, homes
- Connectivity

Frome Gateway



Regenerated central city neighbourhood

- 1,000+ homes
- Workspace
- Student bed spaces
- Enhanced river corridor