

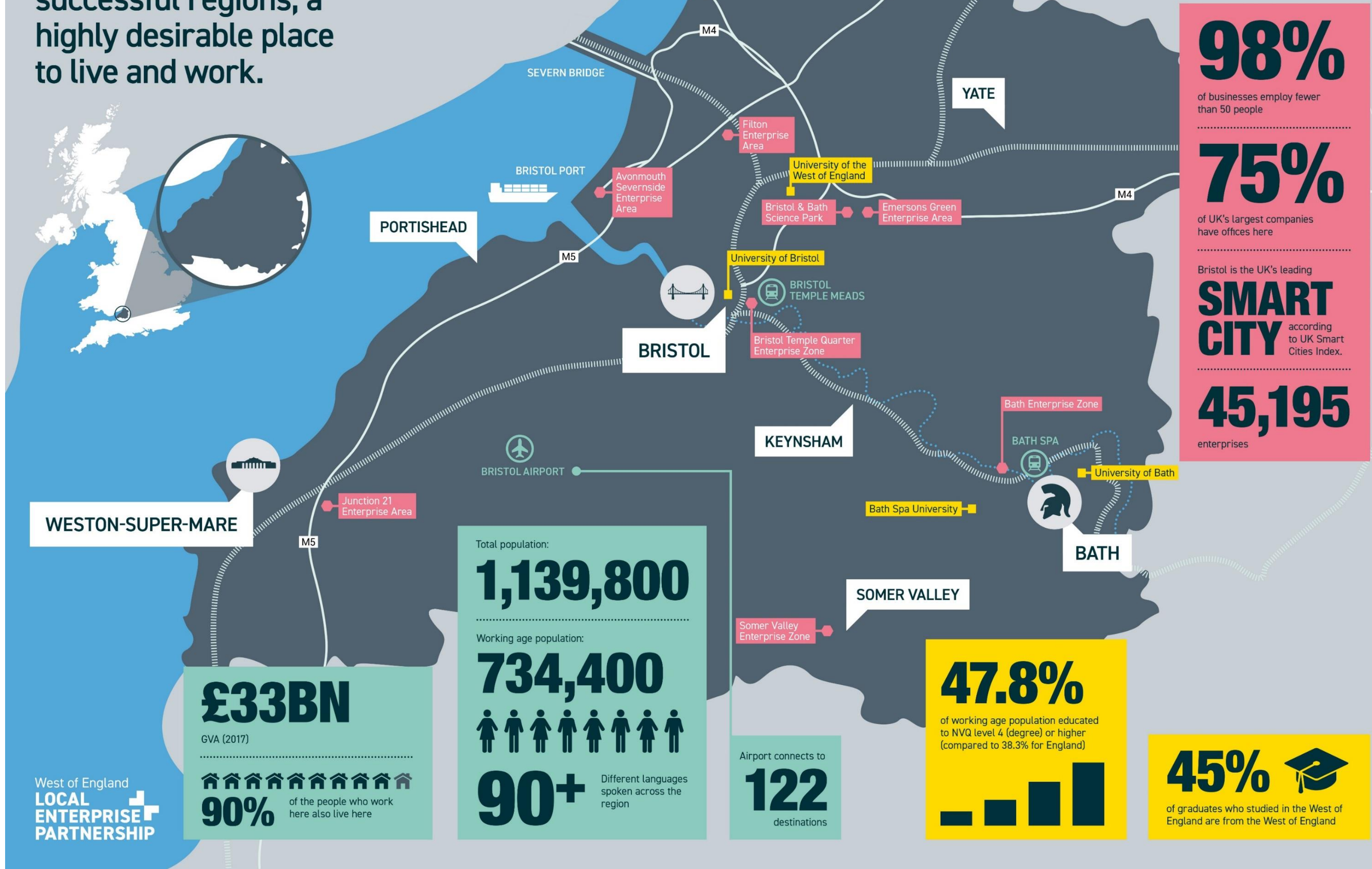
JASON HUMM

Head of Transport

West of England Combined Authority



The West of England is one of the UK's most successful regions, a highly desirable place to live and work.



98%

of businesses employ fewer than 50 people

75%

of UK's largest companies have offices here

Bristol is the UK's leading
SMART CITY according to UK Smart Cities Index.

45,195

enterprises

WESTON-SUPER-MARE

£33BN

GVA (2017)

90% of the people who work here also live here

Total population:
1,139,800

Working age population:
734,400

90+ Different languages spoken across the region

Airport connects to
122 destinations

47.8%

of working age population educated to NVQ level 4 (degree) or higher (compared to 38.3% for England)

45%



of graduates who studied in the West of England are from the West of England

But first watch the video!



Infrastructure and the *draft* JLTP

- The regional vision for travel and transport to 2036
- Deliver strategic infrastructure fit for the future
 - Better links to reduce congestion and connect people
 - Improve national and international connections
 - More affordable homes with a range of housing types
 - Employment spaces to meet the needs of all businesses
 - World-leading digital connections across the region
- Includes measures to address existing and future transport challenges
- Builds on recommendations in the JTS and supports the Joint Spatial Plan

Challenges



Ageing population:
1 in 5 over
65 years old



Transport is the largest
contributor to greenhouse
gas and CO₂ emissions

£300m
annual cost
of congestion

£6bn shortfall
in transport funding



1 in 11 commutes
by public transport



Over 300 premature
deaths a year linked
to NO₂

25%
increase in
projected trips
by 2036



2 of 3
commutes
by car



2 in 5 commutes
are less than 2km

Vision and objectives

‘Connecting people and places for a vibrant and inclusive West of England’



Support sustainable economic growth



Enable equality and improve accessibility



Address poor air quality and take action against climate change

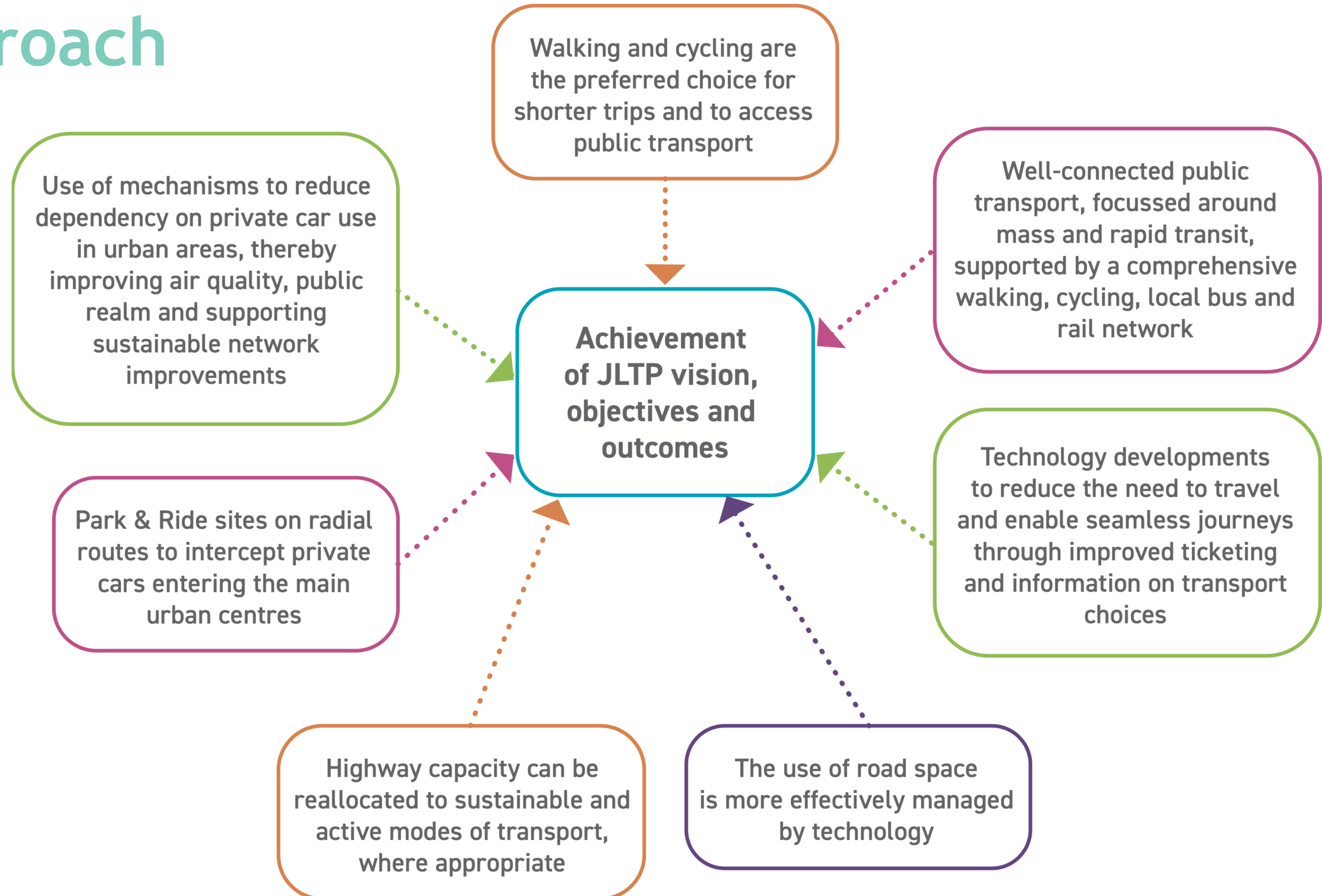


Contribute to better health, wellbeing, safety and security



Create better places

Our approach



Levels of connectivity

Beyond



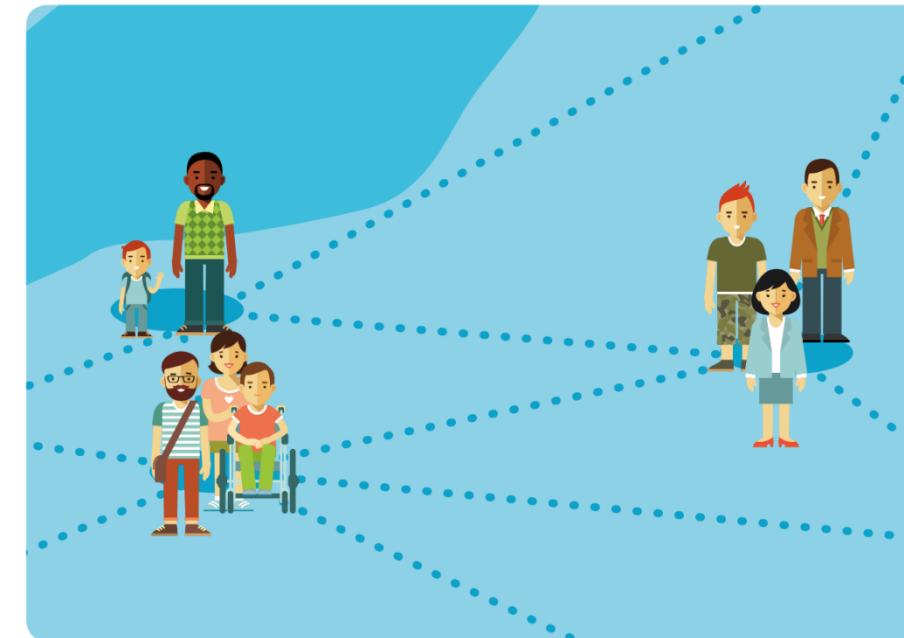
Journeys into and out
of the West of England

Within



Journeys wholly within
the West of England,
but longer than
approximately 10km

Local

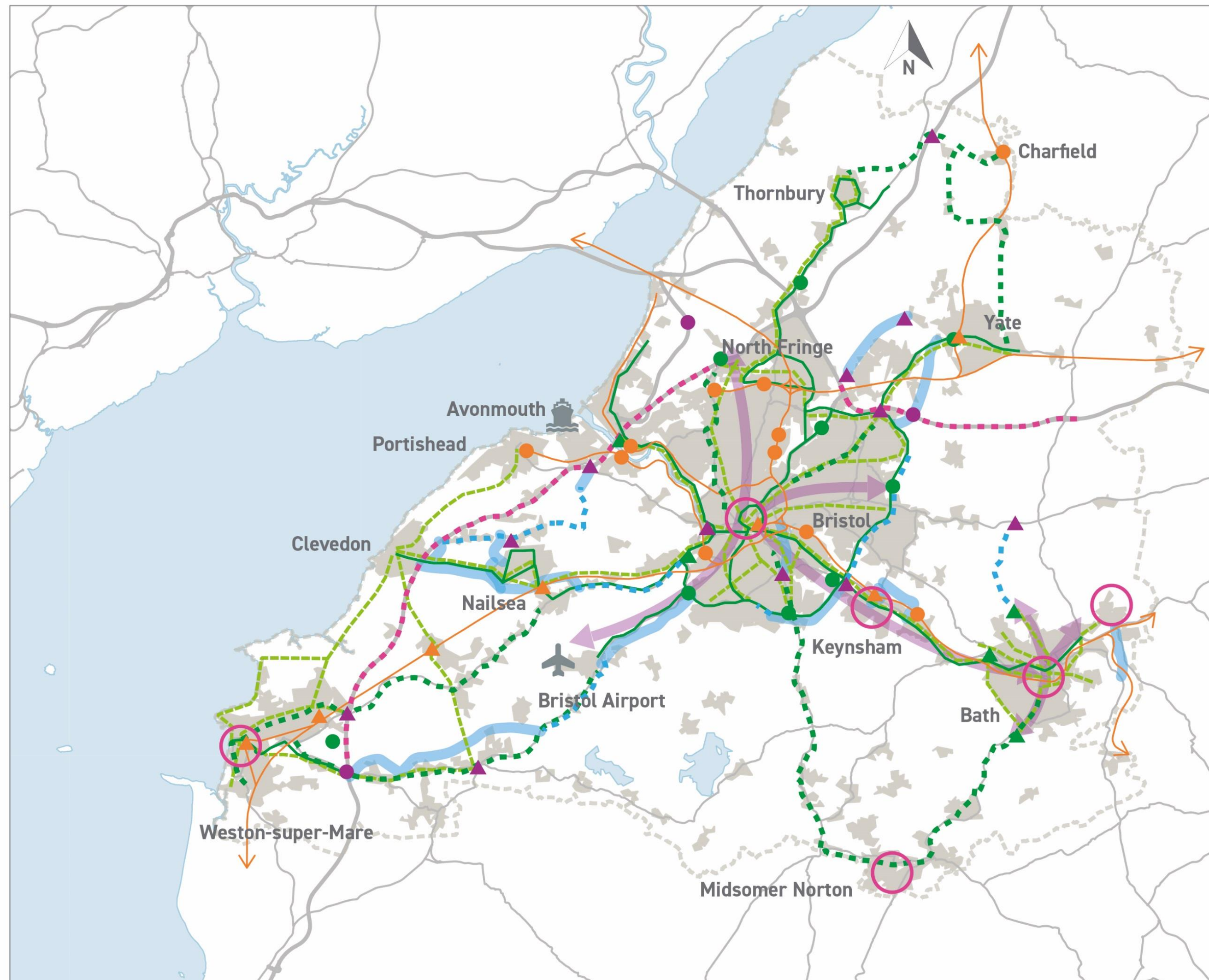


Journeys of up to
approximately 10km

Neighbourhood



Journeys within local
communities, both
urban and rural

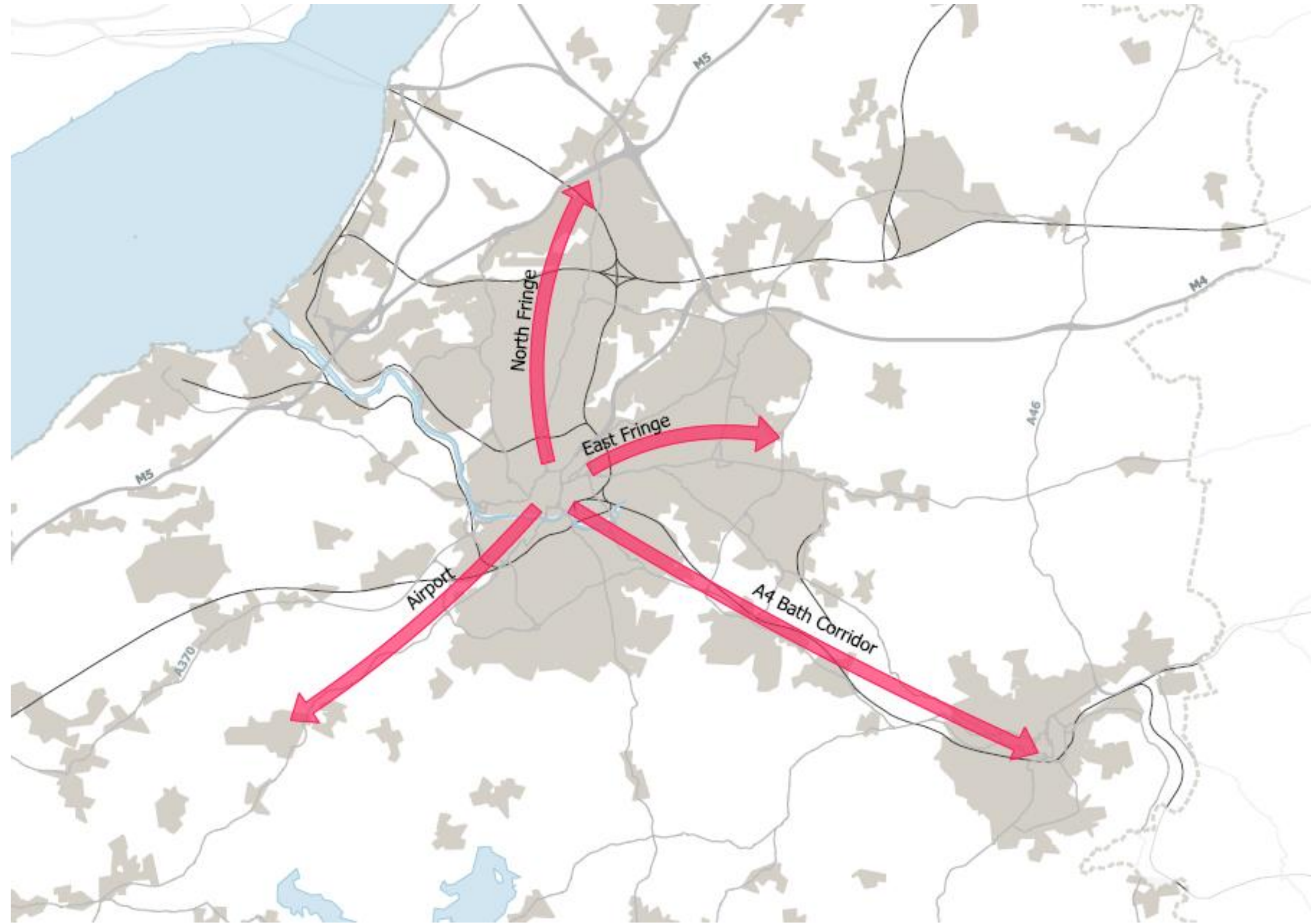


- public realm and sustainable transport improvements
- ▲ improved junctions
- new junctions
- ⋯ improved road
- new road
- ⋯ smart motorway
- ⋯ cycle routes
- ▲ improved rail station
- new rail station
- rail improvements
- metrobus
- ⋯ other bus route improvements
- mass transit
- ▲ expanded Park & Ride site
- new Park & Ride site

Alignments and locations are for illustrative purposes and subject to feasibility studies and consultation.

Mass transit

- Four key corridors and within Bath
- Range of options being explored
- Strategic Outline Business Case and Bath Transport Study to be undertaken



Embracing technology



Provide us with more travel options e.g. driverless vehicles



Increase availability of cleaner fuel and technology, resulting in more hybrid and electric vehicles



Remove the need to travel, in some instances, with improved availability of wireless technology (including 5G) and the ability to access more services remotely



Enable better planning of future transport networks, with 'open' data available to innovators, software developers, transport planners and transport providers



Change the way we access travel information, influencing the choices people make



Working together on transport

- We need a transport network that works for everyone, every day and for every journey.
- **MetroWest** - connecting more communities to the railway by opening new train stations, improving services across the region and re-opening closed stations.
- **Strategic bus network** - getting the right plans in place to build a bus network which works across the region.
- **Metrobus** - building on the success of the new network by working with councils on a roll-out of further routes.
- **Park & Ride** - working with councils to invest in new sites across the region.
- **Walking & Cycling** - shaping a regional plan to build and improve active travel routes.
- **Mass Transit** - continued investment in long-term plans to develop a new transport system connecting our region.
- **Digital connectivity** - investing in technology to explore on-demand transport options and innovative new multi-mode ticketing.

Consultation timescales

6 February 2019

Consultation launched

20 March 2019

Consultation closes

March 2019 onwards

Reponses collated,
considered and used to
prepare final plan

Summer/autumn 2019

Adoption of JLTP4



Spread the word

www.travelwest.info/JLTP

1. Watch the video
2. Use the online priority simulator tool
3. Complete the questionnaire



ANY QUESTIONS?